

# WAUPUN



WAUPUN  
CITY OF SCULPTURE

## RECREATION DEPARTMENT NEWSLETTER

**PLAY LOCAL**

**324-7930**

**APRIL 2024**

### SPRING BREAK FUN FOR ALL AGES

#### Nerf Blaster Battle & Target Shooting

- Bring your own Nerf blaster and darts or use ours
- Bring your own safety glasses
- We will have a target range, obstacle course and play capture the flag



**When: Tuesday, April 2 from 1pm—3pm**

#### Toy Car Racetrack



- Bring your own cars (Hot Wheels) or use ours
- Racetrack and ramps will be set up



**When: Friday, April 5 from 1pm—3pm**



### WHAT'S INSIDE:

- BINGO
- City Interview—Mayor
- Dementia Care Specialist
- Fitness Classes
- Foot Care
- Meals
- Rental Information
- SPARK!
- Taxi Information
- T-Shirts
- **Understanding Our Aging Eyes**  
Presentation by Dr. Bryce Aul

### WAUPUN FAMILY AQUATIC CENTER 2024 INFORMATION

Pool opening day is Saturday, June 1<sup>st</sup>! Season passes may be purchased prior to pool opening online at [www.theydc.org](http://www.theydc.org), or in person at City Hall starting on April 8<sup>th</sup>, or at the Waupun Family Aquatic Center beginning June 1<sup>st</sup>.

Swim lessons registration starts online at [www.theydc.org](http://www.theydc.org) starting on April 8<sup>th</sup> or stop by the YMCA of Dodge County. Hurry! Swim lessons fill up fast.

**Address:** 301 E. Main Street, Waupun, WI 53963

**Phone:** Senior Center Desk Phone (920) 324-7930

**Hours:** Mondays, Wednesdays, Thursdays from 8:00am—4:00pm  
Tuesdays, Fridays from 8:00am—2:00pm

**Email:** [parks@cityofwaupun.org](mailto:parks@cityofwaupun.org)



# ACTIVITIES

## CITY INTERVIEW

Meet and/or catch up with Mayor Bishop. He will give the audience an update on city happenings, make announcements and answer questions from attendees.

**When:** Tuesday, April 16 at 1:00pm



## PUZZLES

We have a lot of puzzles available to take home. Puzzles are located by the front sitting area. Feel free to take some home or bring puzzles from home to share. We also have a table to work on a puzzle when you visit.



## CRAFT CLUB: GARDEN SOCK GNOMES

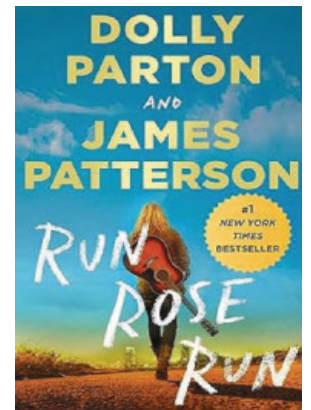
Sock gnomes were a hit the last time we made them, so here they are again, but with a twist! Join us to make garden sock gnomes using artificial succulents! Examples are located by the Recreation Department office. ! All of the supplies are provided. Sign up at the office or call 324-7930.

**When:** Tuesday, April 16 at 11:30am

## APRIL BOOK CLUB

This month's book is titled: *Run, Rose, Run* by Dolly Parton and James Patterson, 448 pages. "A new singer arrives in Nashville. She calls herself AnnieLee Keyes, and she has more beauty, talent, and ambition than most and a dangerous past that she's running from. Her performance of original songs at open-mic night at the Cat's Paw Saloon downtown transfixes Ethan Blake, back-up musician for country star Ruthanna Ryder. Ruthanna may have retired for deeply personal reasons, but that doesn't mean she's stopped writing music. Every day, she records songs she'll never release. When Ruthanna hears AnnieLee sing, the legend decides to help the ingénue." Source: [goodreads.com](https://www.goodreads.com). Pick up your copy after April 1 at the Recreation Department office.

**Optional Discussion:** Friday, April 26 at 9:00am



## KNIT-WITS

This is a social knitting group that works on personal projects while chit chatting. New members are always welcome. We will help with projects. teach knitting or crocheting, how to read patterns etc., but we are not instructors. Bring your own yarn and knitting needles and join us!

**When:** Wednesdays at 6:00pm

## BILLIARDS

We have two pool tables and plenty of billiards equipment to shoot pool anytime the our building is open.

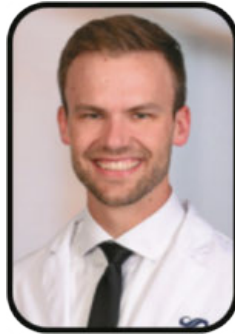


# PROGRAMS

3

## UNDERSTANDING OUR AGING EYES

Join Dr. Bryce Aul, an SSM Health Fond du Lac Regional Clinic ophthalmologist who serves patients in Waupun, as he discusses a variety of eye care issues in older adults and how to treat them. These include general eye care, cataracts, glaucoma, macular degeneration, and dry eye. Sign up at the Senior Center/Rec. Dept. office or call 324-7930.  
**When:** Tuesday, April 9 at 12:30pm



## SPARK!

SPARK! Is an evidence informed program for individuals with mild cognitive impairment, early to moderate dementia, and their care partner or partners. Programming is guided by trained volunteers in a welcoming atmosphere by enjoying art, culture and nature in a comfortable setting. Registration is required. Please call Jeni at Imagine That! Art Studio at 920-937-0470 or email at [jenimaly@imaginethatartstudiowaupun.com](mailto:jenimaly@imaginethatartstudiowaupun.com)  
**When:** Monday, April 1 from 4:00pm—5:00pm  
**Where:** Imagine That! Art Studio located at 408 E. Main Street, Waupun



*Feil's Catering*

Your Senior Dining Provider

Menus & Nutritional Analysis  
at (920) 326-6050



St. Vincent de Paul  
of Dodge County

"We need your help! SVdP is  
looking for volunteers.  
Stop by and apply!"

125 Dodge Dr., Beaver Dam  
885-6971

Please donate your gently used items at the  
thrift store or call to schedule a free pick up.

[www.svdpdodgecounty.org](http://www.svdpdodgecounty.org)  
or on Facebook @dodgecountysvdp

"So you can enjoy life to the fullest"

Kenwood  
SENIOR LIVING



1479 Pleasant Street  
Ripon  
1 & 2 bedroom  
apartments

920-896-0095

[kenwood@accmanagementgroup.com](mailto:kenwood@accmanagementgroup.com)  
[www.accmanagementgroup.com](http://www.accmanagementgroup.com)



My Choice Wisconsin  
is a managed care organization that  
serves government-funded programs  
to seniors and adults with disabilities  
in over 50 Wisconsin counties.

Visit us today:  
[mychoicewi.org/LPI](http://mychoicewi.org/LPI)  
1-800-963-0035

For more information on your long-term care  
options, contact your local ADRC.

DHS Approved 4/22/2021

## LET'S GROW YOUR BUSINESS

### Advertise in our Newsletter!

CONTACT ME  
**Jeff Parkinson**

[jparkinson@lpicommunities.com](mailto:jparkinson@lpicommunities.com)

(800) 950-9952 x5887



For ad info. call 1-800-950-9952 • [www.lpicommunities.com](http://www.lpicommunities.com) City of Waupun Senior Center, Waupun, WI

A 4C 01-1431

# CARDS & TABLE GAMES

## NEW PLAYERS ARE ALWAYS WELCOME!

### MONDAY EUCHRE

Let's play some cards! \$1 to play! Every Monday at 1:00pm.

### MONDAY MARBLES

Marbles or also known as The Aggravation Game is played with 2-6 players. Marbles and playing cards are used to play. Don't know how to play? We will teach you! Every Monday at 9:00am.

### MONDAY GOLF CARDS

Golf is a card game where players try to earn the lowest number of points over the course of nine deals. Please join us on Mondays at 1:00pm.

### TUESDAY HAND & FOOT CARDS

Hand & Foot is a card game related to Canasta. Senior Center rules are provided and we will teach you how to play. It's fun! We play on Tuesdays at 9:00am

### WEDNESDAY & THURSDAY BLACK QUEENS SHEEPSHEAD

Same game and two opportunities to play! Join us! \$1 to play on Wednesdays and Thursdays at 1:00pm.

### WEDNESDAY DICE

Do you like to shake dice? Bank or Bust can be played with 2 or more people. Keep your points or gamble them away! First person to get to 10,000 points wins. Wednesdays at 9:00am.

### THURSDAY DOMINOES

This is not the set up and knock down dominoes. Let's play some real dominoes on Thursdays at 9:00am.

### FRIDAY SE7ENS

Game style of play is very similar to Canasta and Hand & Foot. The name comes from the fact that one of the required books must be made up entirely of sevens, which can be challenging. We play on Fridays at 9:00am.

### BOARD GAMES

There is a book shelf full of different kinds of board games at the Waupun Senior Center. Play one of our games or bring your own game to play! If you want to start a game group or get an organized game together, please let Rachel know.

**\*\*\*NEW\*\*\***

### WEDNESDAY UNO

Taken from a suggestions on our chalkboard, UNO will be played on Wednesday afternoons at 1pm. UNO is a multi-player card game in which the objective is to be the first player to get rid of all the cards in their hand.



# HELLO

## A MESSAGE FROM RACHEL KAMINSKI, RECREATION PROGRAM DIRECTOR, CITY OF WAUPUN

WOW! With so much going on at the Recreation Department lately, I have not been able to fit a “HELLO” into the monthly newsletter. WELP! Running out of room in the newsletter is actually a good thing. That means we are busy having fun! Things are going to get even more fun as summer rolls around. Fall will be even more exciting as we move into our new building. If you need me or just want to chat, stop by my office or give me a call at 324-7930.

Our annual t-shirt design and color are ready for pre-order. Thank you to all who voted and gave their input on this year’s shirt. 2024 T-shirts are “seafoam blue”, 100% cotton (preshrunk) and come in sizes mens small to 5XL. T-shirts are \$10 each. Place your order with me at the Recreation Department office by April 26. *Love, Rachel*



**Kohls Community Funeral Home**

405 West Main Street • Waupun, WI 53963  
920-324-5547 • www.kohlsfh.com



|  |  |
|--|--|
| <p><i>Randolph</i></p> <p><b>Community Funeral Home</b></p> <p>208 S. High St.<br/>Randolph, WI 53956<br/>(920) 326-5131<br/>www.randolphfh.com</p> <p>Jamie Minnema<br/><i>Funeral Director/Manager</i></p> | <p><i>Markesan</i></p> <p><b>Community Funeral Home</b></p> <p>868 N. Margaret St.<br/>Markesan, WI 53946<br/>(920) 398-1522<br/>www.markesanfh.com</p> <p>Elizabeth Federer<br/><i>Funeral Director</i></p> |
|--|--|

**NEVER MISS OUR NEWSLETTER!**

**SUBSCRIBE**

Have our newsletter emailed to you.



Visit [www.mycommunityonline.com](http://www.mycommunityonline.com)

**ADT-Monitored Home Security**

Get 24-Hour Protection From a Name You Can Trust

- Burglary
- Flood Detection
- Fire Safety
- Carbon Monoxide



ADT Authorized Provider | SafeStreets

**833-287-3502**

*“It’s my life and they respect that.”*

Local long-term care supports and services delivered with a focus on Life. Defined by you.



**INCLUSA**

inclusa.org | 877-376-6113



# 6 APRIL ACTIVITY CALENDAR

| MONDAY   | TUESDAY  | WEDNESDAY  | THURSDAY  | FRIDAY   |
|--|--|--|---|--|
| <b>1</b><br>8am Fitness Center<br>9am Marbles<br>10:30am Yoga<br>11:45am Lunch<br>1pm Euchre<br>1pm Golf Cards<br>4pm SPARK!<br>6pm Pickleball | <b>2</b><br>8am Fitness Center<br>9am Hand & Foot Cards<br>10:30am Tone<br>11:45am Lunch<br>1pm Nerf   | <b>3</b><br>8am Fitness Center<br>9am Dice<br>10:30am Aerobics<br>11:45am Lunch<br>1pm Sheepshead<br>1pm UNO<br>6pm Knit-Wits  | <b>4</b><br>8am Fitness Center<br>8:30am Foot Care<br>9am Dominoes<br>10:30am Yoga<br>1pm Sheepshead              | <b>5</b><br>8am Fitness Center<br>9am Se7ens<br>10:30am Aerobics<br>1pm Racetrack                        |
| <b>8</b><br>8am Fitness Center<br>9am Marbles<br>10:30am Yoga<br>11:45pm Lunch<br>1pm Euchre<br>1pm Golf Cards<br>6pm Pickleball               | <b>9</b><br>8am Fitness Center<br>9am Hand & Foot Cards<br>10:30am Tone<br>11:45am Lunch<br>Noon Blood Pressure<br>12:30pm <i>Understanding Our Aging Eyes</i> | <b>10</b><br>8am Fitness Center<br>9am Dice<br>10:30am Aerobics<br>11:45am Lunch<br>1pm Sheepshead<br>1pm UNO<br>6pm Knit-Wits   | <b>11</b><br>8am Fitness Center<br>9am Dominoes<br>10:30am Yoga<br>1pm Sheepshead                                 | <b>12</b><br>8am Fitness Center<br>9am Se7ens<br>10:30am Aerobics<br>1pm SIA Bingo                       |
| <b>15</b><br>8am Fitness Center<br>9am Marbles<br>10:30am Yoga<br>11:45pm Lunch<br>1pm Euchre<br>1pm Golf Cards<br>6pm Pickleball              | <b>16</b><br>8am Fitness Center<br>9am Hand & Foot Cards<br>10:30am Tone<br>11:30am Craft Club<br>11:45am Lunch<br>1pm Mayor                                   | <b>17</b><br>8am Fitness Center<br>9am Dice<br>9am Prairie Ridge Yoga<br>10:30am Aerobics<br>11:45am Lunch<br>12:30pm Eyeglasses<br>1pm Sheepshead<br>1pm UNO<br>6pm Knit-Wits | <b>18</b><br>8am Fitness Center<br>8:30am Foot Care<br>9am Dominoes<br>10:30am Yoga<br>1pm Sheepshead             | <b>19</b><br>8am Fitness Center<br>9am Se7ens<br>10:30am Aerobics<br>1pm Prairie Ridge Bingo             |
| <b>22</b><br>8am Fitness Center<br>9am Marbles<br>10:30am Yoga<br>1pm Euchre<br>1pm Golf Cards<br>6pm Pickleball                               | <b>23</b><br>8am Fitness Center<br>9am Hand & Foot Cards<br>10:30am Tone<br>11:45am Lunch  | <b>24</b><br>8am Fitness Center<br>9am Dice<br>10:30am Aerobics<br>11:45am Lunch<br>1pm Sheepshead<br>1pm UNO<br>6pm Knit-Wits   | <b>25</b><br>8am Fitness Center<br>9am Dominoes<br>9am Dementia Care Specialist<br>10:30am Yoga<br>1pm Sheepshead | <b>26</b><br>8am Fitness Center<br>9am Se7ens<br>9am Book Club<br>10:30am Aerobics<br>2:00pm Buddy Bingo |
| <b>29</b><br>8am Fitness Center<br>9am Marbles<br>10:30am Yoga<br>1pm Euchre<br>1pm Golf Cards<br>6pm Pickleball                               | <b>30</b><br>8am Fitness Center<br>9am Hand & Foot Cards<br>10:30am Tone<br>11:45am Lunch  |  <p><b>APRIL</b></p>  |   |  |

**SCHEDULE IS SUBJECT TO CHANGES. PLEASE CALL 324-7930 TO VERIFY.**

# APRIL LUNCH MENU

The Waupun Senior Center lunch program is brought to us by the elderly nutrition program of ADRC of Fond du Lac County with the goal of providing one hot, nutritious meal containing 1/3 of daily dietary needs. All meals served with 2% milk. Menu is subject to change without notice.

**When:** Indoor dining at 11:45am, Monday—Wednesday **CLOSED Thursdays & Fridays**

- \$5.00 suggested donation

**When:** Mobile meals are delivered between 9:30am and 11:30am, Monday—Friday

- \$5.00 suggested donation






**Eligibility:** Available to all persons age 60 years of age or older or a spouse/domestic partner (under age 60) who is eating with their spouse/domestic partner who is age 60 or older. No person shall be excluded from participation in, be denied benefits of, or be subjected to discrimination on the grounds of race, color, creed, sex, national origin or their ability to pay. Persons under age 60, cost of meal is \$8.72.

**Registration:** Participants can register up to ONE MONTH ahead but no later than one business day prior by 11:30am by calling 324-7930.

**Cancellations:** If you must cancel, please call 324-7930 as soon as possible.

**Mobile Meals:** To see if you or someone you know are eligible please call 920-929-3466.

| MONDAY   | TUESDAY   | WEDNESDAY  | THURSDAY<br>Mobile Meals Only   | FRIDAY<br>Mobile Meals Only   |
|--|---|--|---|---|
| 1<br>Glazed Ham<br>Sweet Potato Bake<br>Broccoli Cuts<br>Apricot Halves<br>Alexander Torte<br>Sliced Bread                                   | 2<br>Chopped Steak<br>Mashed Potatoes<br>Mixed Vegetables<br>Pear Slices<br>Cookie<br>Dinner Roll                     | 3<br>Baked Spaghetti Casserole<br>Tossed Salad<br>Fruited Gelatin<br>Ice Cream Cup<br>French Bread         | 4<br>Beef Frank on Bun<br>Baked Beans<br>Corn<br>Honeydew Melon<br>Birthday Cake  | 5<br>Cranberry/Kraut Meatballs<br>Garlic Mashed Potatoes<br>Brussel Sprouts<br>Apple<br>Vanilla Pudding<br>Sliced Bread   |
| 8<br>Country Fried Steak<br>Mashed Potatoes<br>Peas & Carrots<br>Pineapple Tidbits<br>Cookie<br>Sliced Bread                                 | 9<br>Orange Chicken Patty<br>Baked Potato<br>Peas/Pearl Onions<br>Applesauce<br>Chocolate/Banana Torte<br>Dinner Roll | 10<br>Roast Pork Loin<br>Mashed Potatoes<br>Green Beans<br>Peach Slices<br>Vanilla Pudding<br>Sliced Bread | 11<br>Chili Casserole<br>Spinach Salad w/ Asian Dressing<br>Honeydew Melon<br>Raspberry Sherbet<br>Cornbread                            | 12<br>Pot Roast<br>Baby Red Potatoes<br>Baby Carrots<br>Orange<br>Cookie<br>Sliced Bread  |
| 15<br>Roast Turkey<br>Mashed Potatoes<br>California Blend Veggies<br>Tropical Fruit Salad<br>Spice Cake<br>Sliced Bread                      | 16<br>Beef Stroganoff Casserole<br>Broccoli Cuts<br>Apricot Halves<br>Ice Cream Cup<br>Dinner Roll                    | 17<br>Smoked Sausage<br>Calico Bean Casserole<br>Tossed Salad<br>Apple<br>Cookie<br>Sliced Bread           | 18<br>Pepper Steak<br>Baked Potato<br>Peas & Carrots<br>Pineapple Tidbits<br>Alexander Torte<br>Dinner Roll                             | 19<br>Chicken Patty<br>Mashed Potatoes<br>Raw Carrots w/dip<br>Petite Banana<br>Chocolate Pudding<br>Sliced Bread   |
| 22<br>Salisbury Steak<br>Mashed Potatoes<br>Mixed Vegetables<br>Pear Slices<br>Cookie<br>Sliced Bread  | 23<br>BBQ Pork Cutlet<br>Baked Beans<br>Health Slaw<br>Mandarin Orange Gelatin<br>Cinnamon Roll<br>Dinner Roll        | 24<br>Chopped Steak<br>Mashed Potatoes<br>Carrots<br>Applesauce<br>Ice Cream Cup<br>Sliced Bread           | 25<br>Chicken Tetrizzini<br>Casserole<br>Broccoli Cuts<br>Honeydew Melon<br>Applesauce Cake<br>Dinner Roll                              | 26<br>Breaded Fish Fillet<br>German Potato Salad<br>Peas & Carrots<br>Orange<br>Cookie<br>French Bread  |
| 29<br>Honey Mustard<br>Meatballs<br>Baked Potato<br>California Blend Veggies<br>Tropical Fruit Salad<br>Butterscotch Pudding<br>Sliced Bread | 30<br>Pork Jaegerschnitzel<br>Mashed Potatoes<br>Baby Carrots<br>Apricot Halves<br>Raspberry Sherbet<br>Dinner Roll   |                         | <b>Senior Dining</b><br><br>Fellowship, Food & Fun | <br><i>Feil's Catering</i><br>Your Senior Dining Provider<br>Menus & Nutritional Analysis<br>at (920) 326-6050 |

# FITNESS & FUN

## FITNESS CENTER

The Waupun Senior Center/Recreation Department has 14 resistance fitness machines, a treadmill, and a cabinet of handheld weights, resistance bands, and exercise balls. We use a timer to rotate and everyone. We will show you how to use each piece of equipment. We clean the machine after each use with a disinfectant wipe. Please join us!

**When:** Monday—Friday from 8:00am—10:00am

## TUESDAY TONE

Tuesday Tone is a combination of yoga and aerobics. The movements taught in class focus on specific exercises to improve leg strength. A chair is used for balance and support.

**When:** Tuesdays at 10:30am

## PRAIRIE RIDGE YOGA

Join us for a new yoga class at Prairie Ridge Assisted Living! We are taking our yoga class to Prairie Ridge and you are invited! Prairie Ridge Assisted Living located at 819 Wilcox Street.

**When:** Wednesday, April 17 at 9:00am

## YOGA

Chair support is offered for standing and seated yoga poses. This class focuses on stretching your whole body by focusing on specific muscle and muscle groups. Please wear tennis shoes.

**When:** Mondays & Thursdays at 10:30am

## AEROBICS

Move to the music through a variety of exercises designed to increase muscle strength, range of motion and activities for daily living. Hand-held weights, elastic band with handles and a small ball are offered for resistance. A chair is used for seated exercises and standing support.

**When:** Wednesdays & Fridays at 10:30am

## PICKLEBALL

Pickleball is played on a badminton size court. Players use paddles and a heavy wiffle ball to play. Players rotate in and change teams throughout the evening. Come play or watch!

**When:** Mondays at 6:00pm (Indoor) Wesley Center Gym located at 114 S. Forest Street

## HOTEL SWIMMING

We are happy to share that Baymont hotel in Waupun has open swimming in their indoor pool! Swimming is allowed in the hotel pool Monday—Friday from 8:00am—2:00pm.

**ALL SENIOR SWIMMERS MUST HAVE A MEDICAL DOCTOR'S NOTE TO USE THE HOTEL POOL! FEE TO SWIM IS \$4 EACH TIME YOU SWIM!**

**Where:** 5 Gateway Drive, Waupun

## PING PONG

We have a removable ping pong table that sits on our pool table! This is easy set up and take down. The ping pong table, net, paddles, and ping pong balls will be available all month. If you want to meet and play, please let Rachel know to set up the ping pong table.



# RENTALS

## BUILDING RENTAL

Rent the Waupun Senior Center/Recreation Department building! It is a large space for birthday parties, anniversaries, holiday parties, wedding receptions and showers!

**Amenities:** Refrigerator/freezer, microwave, stove, 30-cup coffee maker, handicap accessible entry/seating and serveware for 60 people, serving window, freedom to rearrange tables and chairs as needed, free WiFi and more!

### Rental Fees:

- Weekdays: \$50 (5:00pm—9:00pm)
  - Weekends & Holidays: \$50 (4 Hours) or \$75 (8 Hours)
  - All rentals require a separate \$50.00 Key/Cleaning Security Deposit
- To check availability and/or schedule, please call 324-7930 and ask for Rachel.


## PARK SHELTER RENTALS

Are you looking for an outdoor space to host a graduation party, family reunion, wedding, etc.? There are several park shelters in town that can accommodate small to large group gatherings.

### Park Shelters Available:

- Dodge Park—\$65 resident/\$90 non
- Harris Mill Park—\$65 resident/\$90 non
- West End Park—\$65 resident/\$90 non
- Wilcox Park—\$65 resident/\$90 non
- McCune Park—\$65 resident/\$90 non
- McCune Park Concession Stand—\$100 resident/\$115 non (+\$50 deposit)

To check availability and/or schedule, please call 324-7930 and ask for Rachel.



**THRIVE  
LOCALLY**

### Concerned about Medicare fraud? Give us a call...

**PROTECT** your personal information  
**DETECT** suspected fraud, abuse, or errors  
**REPORT** suspicious claims or activities

**Toll-free Helpline:  
888-818-2611  
www.smpwi.org**

 WisconsinSeniorMedicarePatrol



**SMP**  
Senior Medicare Patrol  
Preventing Medicare Fraud



This project was supported, in part by grant number 90MPPG0102-01-00, from the U.S. Administration for Community Living, Department of Health and Human Services, Washington, D.C. 20201.

### FOR THEM. AND FOR YOU.

A DreamSecure Senior Whole Life Insurance policy from American Family Life Insurance Company is a simple way to provide the people you love with some financial protection to help with your final expenses.

Prepare for tomorrow, and find peace of mind for today. I can help.



**Kristine Feil, Agent**  
11 S Watertown St, Waupun  
Bus: (920) 324-3488  
kmoodie@anfam.com



Life insurance underwritten by American Family Life Insurance Company, 6000 American Parkway Madison, WI 53719 (914) 12 17 82 917 - 1403 0118. Policy Form ICC17-229-BL, Policy Form L-229-BL, Policy Form L-229-BL.

### NEVER MISS OUR NEWSLETTER!

**SUBSCRIBE**

Have our newsletter emailed to you.



Visit [www.mycommunityonline.com](http://www.mycommunityonline.com)

### LET'S GROW YOUR BUSINESS

Advertise in our Newsletter!

**CONTACT ME Jeff Parkinson**

[jparkinson@lpicommunities.com](mailto:jparkinson@lpicommunities.com) • (800) 950-9952 x5887

# SERVICES

## DEMENTIA CARE SPECIALIST OFFICE HOURS

Join Alyssa Sommerfeldt, Fond du Lac County Dementia Care Specialist, to talk about dementia. Alyssa is available to perform memory screens, provide support and dementia related resources for those living with the disease and their caregivers, or available to just chat.

**When:** Thursday, April 25 from 9:00am to 11:30am

## GOT GLASSES?

We have a container for used eyeglasses, sunglasses and glasses cases. The container is provided and picked up by the Waupun Lions Club for redistribution. The container is located by the front door of our building. Thank you!

## FOOT CARE CLINIC

Professional foot care services include: a thorough lower leg and foot assessment, toenail trimming, reducing of calluses and/or corns, thinning or debridement of thick toenails, moisturizing lower leg and foot massage by Keren from Lotus Foot Care, LLC. Please bring a bath towel to your appointment.

**Fee:** \$35/30 minute appointment or until foot care is complete. \$40 new patients.

**When:** Thursday, April 4  
Thursday, April 18  
Thursday, May 2  
Thursday, May 16

Appointments begin at 8:30am. Last appointment is at 4:00pm. Call 324-7930 to schedule your appointment. Appointments can be made months in advance.

---

---

## EYEGLASS ADJUSTMENTS

Teresa Ruch from Rock River Eyewear will be at the Waupun Senior/ Recreation Department to do any eyeglass or sunglass adjusting, replacement of screws, or nose pads. Cleaning supplies will be available for free.

**When:** Wednesday, April 17 at 12:30pm—1:00pm



---

---

## DRUG REPOSITORY (DROP-OFF)

Church Health Services, Inc. is seeking unused/ unneeded medicines and medical supplies.

- Prescription & Over the Counter Medications (non-opioids)
- Medical Supplies & Equipment
  - (wheelchairs, walkers, canes, adult diapers, etc.)

As a drug repository member with a licensed pharmacist, we are able to accept, store and dispense donated medications and medical supplies to individuals who are low income. Please do not bring any opioids and leave all items in the original container. To find out if you are eligible to receive or to learn more; call 920-887-1766, option 1 or email us at [info@churchclinic.org](mailto:info@churchclinic.org). Drug repository donations can be brought to the Waupun Senior Center by appointment only by calling 324-7930.



# SERVICES

11

## BLOOD PRESSURE SCREENINGS

Katie from Care Plus will be at the Waupun Senior Center/Recreation Department once a month to do free walk-in blood pressure screenings. These screenings are not intended to diagnose and medical condition,

**When:** Tuesday, April 9 from Noon—1:00pm



## TECH SUPPORT

Need help? This is a one-on-one service to take care of your tech related needs. Bring your personal laptop, tablet or cell phone. You can also learn using one of the Waupun Senior Center laptops. Appointments can be scheduled by calling 324-7930.

## LUNCH PROGRAM VOLUNTEERS

We are looking for lunch program volunteers in the Waupun Senior Center kitchen. Volunteer hours are approximately 9:30am – 12:30pm on the day scheduled. Volunteers receive a free meal.

Please call 920-929-3937, if you are interested in volunteering. **Volunteer duties include:**

Cleaning the dining room tables and chairs, Taking temperatures, Setting the dining room tables, Reporting lunch attendance and registration & Serving lunch

## SERVE WAUPUN REQUESTS

SERVE Waupun is an outreach wing of ONE Waupun, with the goal of helping connect people with a need to a group looking to help others. This awesome group of volunteers at SERVE Waupun continue to look for ways to help people with needs in our community. If you know of someone with a need or who could use a group of individuals with some tools and handyman skills, please email [mvb2serve@gmail.com](mailto:mvb2serve@gmail.com) or contact Rachel Kaminski at 920-324-7930.

# NEED A RIDE?

SAFE & RELIABLE TAXI SERVICE

WAUPUN TAXI

920-324-2426

[www.browncab.net](http://www.browncab.net)



Serving primarily within the City Limits plus 1 mile. When volume allows up to five miles.

TITLE VI and ADA The City of Waupun Shared Ride Taxi Service operates its programs and services without regard to race, color, national origin, disability, sex, age, religion, income status or limited English proficiency (LEP) in accordance with Title VI of the Civil Rights Act, Americans with Disabilities Act (ADA), and related nondiscrimination authorities. For more information on the Waupun Shared Ride Taxi civil rights program, ADA obligations, and the procedures to file a complaint, contact City Hall at 920-324-7900, (for hearing impaired, please use Wisconsin Relay 711 service <https://wisconsinrelay.com>). Waupun Taxi is an equal opportunity employer.

— FOLLOW US ON —  
**FACEBOOK**



WAUPUN RECREATION DEPARTMENT

- Activity Announcements
- Activity Pictures
- Resources
- Updates



# BINGO

We are going to play bingo three times this month!

Thanks to our great sponsors!

Our awesome bingo cards were donated by the Waupun Lions Club.

- **FRIDAY, APRIL 12 at 1:00PM**
- **FRIDAY, APRIL 19 at 1:00PM—AT PRAIRIE RIDGE**
- **FRIDAY, APRIL 26 at 2:00PM**

**Friday, April 12 at 1:00pm**

***Sponsored by SIA Insurance Services***

SIA is proud to sponsor 2<sup>nd</sup> Friday Bingo for the Waupun Senior Center! Jordan Sterk, Kate Burk and Kyle Heuver are excited to be joining you this year as your bingo callers. Can't wait to see you on the 2<sup>nd</sup> Friday of every month at 1:00pm. Pizza provided by Pizza Ranch.



999 W. Main Street, Waupun  
www.SIAInsurance.com  
(920) 324-2071



Kate Burk



Jordan Sterk



Kyle Heuver

**Friday, April 19 at 1:00pm—AT Prairie Ridge**

***Sponsored by Prairie Ridge***

We are invited to play bingo at Prairie Ridge Assisted Living! Let's visit our friends at Prairie Ridge to play bingo their way at their place! Prairie Ridge Assisted Living is located at 819 Wilcox Street in Waupun.



**Friday, April 26 at 2:00pm**

***Buddy Bingo***

We will be joined by the third grade students from Rock River Intermediate School to play bingo in teams. Adults and students will be paired together to play. There will be bingo prizes for each buddy on the winning team.

