

CITY OF WAUPUN



# 2024 RECREATION GUIDE

Like us on  
Facebook!  
Waupun  
Recreation  
Department



YOUR GUIDE TO SUMMER  
ACTIVITIES AND EVENTS  
AROUND THE COMMUNITY!

Waupun  
Recreation  
Department  
301 E. Main Street  
(920) 324-7930

[www.cityofwaupun.org](http://www.cityofwaupun.org)

# WHAT'S INSIDE

|                    |  |
|--------------------|--|
| <b>Page 3</b>      | Summer Kick-Off Party                              |
| <b>Pages 4—5</b>   | Park Program Registration & Information            |
| <b>Pages 6—10</b>  | Park Program Activity Calendar                     |
| <b>Pages 11—24</b> | Park Program Activities                            |
| <b>Pages 25—30</b> | Park Program Special Events                        |
| <b>Page 31</b>     | Park Program Field Trips                           |
| <b>Pages 31—33</b> | July is National Park & Recreation Month Events    |
| <b>Page 34</b>     | Waupun Fine Arts Concerts in the Park & Craft Show |
| <b>Page 35</b>     | Knitting & Craft Center                            |
| <b>Page 36</b>     | Gymnastics   |
| <b>Page 37</b>     | Adult Sports                                       |
| <b>Pages 38—39</b> | Waupun Senior Center Information                   |
| <b>Pages 40—41</b> | Waupun Public Library Information                  |
| <b>Pages 42—47</b> | Waupun Family Aquatic Center Information           |
| <b>Page 48</b>     | New Community Center Flyer                         |
| <b>Page 49</b>     | Bean Bag Toss Rental Form                          |
| <b>Page 50</b>     | Park Guide   |
| <b>Page 51</b>     | Park Shelter Rental Information                    |
| <b>Page 52</b>     | Park Shelter Rental Permit                         |
| <b>Page 53</b>     | Dog Park   |
| <b>Page 54</b>     | Make Your Mark on the Park & Be Included in Guide  |

CITY OF WAUPUN



# SUMMER KICK-OFF PARTY

Thursday, May 30  
5:00pm – 7:00pm  
West End Park  
200 Beaver Dam Street



## FEATURING

DJ/Karaoke,  
Face painting/Temporary Tattoos,  
Photo Op, Craft Project,  
Lawn Games, Inflatables,  
Kona Ice



## GET ALL OF YOUR SUMMER 2024 INFO



Waupun Park Program



Library Summer Reading Program



Waupun Family Aquatic Center

Contact Information:  
Call: (920) 324-7930  
Email: [parks@cityofwaupun.org](mailto:parks@cityofwaupun.org)  
Facebook: Waupun Recreation Department



**WAUPUN**  
CITY OF SCULPTURE

**WAUPUN RECREATION DEPARTMENT**

# **PARK PROGRAM SUMMER 2024**

**JUNE 3 - AUGUST 9  
MONDAY - FRIDAY  
9AM - NOON & 1PM - 4PM**



**WAUPUN  
CITY OF SCULPTURE**



**SCAN HERE!**

# PARK PROGRAM GUIDELINES<sub>5</sub>

**Ages:** 7+ (Under 7 years old with a caregiver)

**Dates:** June 3 – August 9, 2024 (Closed on July 4. May cancel due to bad weather and staff availability.)

**Regular Locations:** Dodge Park, Pine Street Park & West End Park

**Times:** Monday – Friday, 9:00am – Noon & 1:00pm – 4:00pm

**Special Event Locations Listed on Calendar:** Library, Harris Mill Park, Ice Arena, Tanner Park, Senior Center/ Recreation Department, Aquatic Center, Field Trips

**Contact:** Rachel Kaminski at 920-324-7930 or [parks@cityofwaupun.org](mailto:parks@cityofwaupun.org)



## What to Expect:

Are your kids ready for fun in the park? This year's summer park drop-in program will be filled with MORE activities. From art exploration to interactive play to special events, your kids won't want to miss this summer fun. Each week, we will follow an activity schedule at our parks with all the equipment and supplies needed to play and create.

## Registration & Fees:

\$10/child for the entire summer. Additional \$10/child for each field trip. Online registration and payment can be found at <https://www.cityofwaupun.org/parksrec/page/park-programs>. If you need a paper copy, please call or email the Waupun Recreation Department at 920-324-7930 or [parks@cityofwaupun.org](mailto:parks@cityofwaupun.org).

## Proper Playground Attire & Necessities:

- **Please dress your children comfortably.** Shorts and t-shirt are fine please dress to get messy! Your child will be active outdoors as well as participating in arts and crafts. We recommend shoes and socks.
- **Personal Items.** Please label everything with your child's name. Do not send valuables to Park Program activities. Send a backpack or other tote bag for their belongings.
- **Sunscreen.** Children will be outdoors and exposed to sun. Please apply sunscreen and send sunscreen to be reapplied during the day. Park leaders are not allowed to apply sunscreen for participants, but will remind children to reapply throughout the day.
- **Stay Hydrated.** Please encourage your child to bring a water bottle and drink plenty of fluids throughout the day.
- **Health.** Please keep your children home if they are sick. We realize that some children might have medication needs. Please know that staff cannot administer or hold any medications. Park leaders are CPR trained.

## Playground Code of Conduct:

To ensure the enjoyment and a positive experience for everyone, the City of Waupun Recreation Department has established a "Code of Conduct" for the Park Program. Everyone is expected to be Safe, Responsible and Respectful by practicing the following:

- Be quiet and attentive when the Park Leader is providing instruction.
- Be responsible with equipment, including using the equipment for its intended purpose and putting the equipment away when finished.
- Be respectful by avoiding hitting, kicking, pushing and like behavior.
- Be courteous and use appropriate language.
- Be safe when playing and crossing the street.

**Please take time to review the code of conduct with your child so everyone can have a safe and enjoyable summer!** Note that the Summer Park Program is not a substitute for daycare. If a child has a behavior problem during the day, a program supervisor will be reaching out to talk with you about ways to resolve concerns. This may be necessary before your child is permitted back into the Park Program.

## Weather:

In the case of bad weather, the Park Program will close. Rain, cold, severe weather warnings and watches will determine closure. Registered participants will be sent home and parents will be contacted. Weather related closures will be posted on Facebook (**Waupun Recreation Department**) and at [www.cityofwaupun.org](http://www.cityofwaupun.org).

# 6 PARK PROGRAM CALENDAR

|                                 | MONDAY  | TUESDAY   | WEDNESDAY   | THURSDAY   | FRIDAY  |
|---------------------------------|---|---|---|--|---|
| <b>JUNE</b>                     | <b>3</b>  | <b>4</b>  | <b>5</b>  | <b>Bike Rodeo 6</b>                                  | <b>7</b>  |
| <b>Pine Street Park Program</b> | 9am Crafts<br>10am Nature Walk<br>11am Obstacle Course<br>1pm Crafts<br>2pm Scavenger Hunt<br>3pm Tag Games   | 9am Crafts<br>10am Fishing<br>11am Fish Games<br>1pm Crafts<br>2pm Boat Races<br>3pm Relay Races    | 9am Crafts<br>10am Nature Bingo<br>11am Chalk<br>1pm Crafts<br>2pm Capture the Flag<br>3pm Hula Hoops | 9am Crafts<br>10am Frogs<br>11am Parachute           | 9am Crafts<br>10am Bucket Pong<br>11am Simon Says<br>1pm Crafts<br>2pm Hide & Seek<br>3pm I Spy         |
| <b>Dodge Park Program</b>       | 9am Crafts<br>10am Board Games<br>11am Rockets & Planes<br>1pm Crafts<br>2pm Flag Football<br>3pm Four Square | 9am Crafts<br>10am Legos<br>11am Music Games<br>1pm Crafts<br>2pm Kickball<br>3pm Golf              | 9am Crafts<br>10am Story Time<br>11am Bubbles<br>1pm Crafts<br>2pm Soccer<br>3pm Water Games          | 9am Crafts<br>10am Sandcastles<br>11am Trucks & Cars | 9am Crafts<br>10am Bowling<br>11am Heads Up<br>1pm Crafts<br>2pm Bucket Games<br>3pm Ninja Warrior      |
| <b>West End Park Program</b>    | 9am Crafts<br>10am Horseshoes<br>11am Lawn Games<br>1pm Crafts<br>2pm-4pm Ag in the Park                      | 9am Crafts<br>10am Giant Games<br>11am Tie-Dye<br>1pm Crafts<br>2pm Fitness Games<br>3pm Pickleball | 9am Crafts<br>10am Balloon Games<br>11am Disc Golf<br>1pm Crafts<br>2pm Kick the Can<br>3pm Tennis    | 9am Crafts<br>10am Roller Games<br>11am Hockey       | 9am Crafts<br>10am Minute Games<br>11am SPUD<br>1pm Crafts<br>2pm Steal the Bacon<br>3pm Sharks&Minnows |
| <b>Special Events</b>           | <b>Park Program Starts</b>  |   |   | <b>1pm Bike Rodeo at Community Center</b>            |   |

| <b>JUNE</b>                     | <b>10</b>   | <b>11</b>   | <b>12</b>   | <b>13</b>   | <b>14</b>  |
|---------------------------------|---|---|---|---|--|
| <b>Pine Street Park Program</b> | 9am Crafts<br>10am Nature Walk<br>11am Obstacle Course<br>1pm Crafts<br>2pm Scavenger Hunt<br>3pm Tag Games   | 9am Crafts<br>10am Fishing<br>11am Fish Games<br>1pm Crafts<br>2pm Boat Races<br>3pm Relay Races    | 9am Crafts<br>10am Nature Bingo<br>11am Chalk<br>1pm Crafts<br>2pm Capture the Flag<br>3pm Hula Hoops | 9am Crafts<br>10am Frogs<br>11am Parachute<br>1pm Crafts<br>2pm Duck Races<br>3pm Noodle Games          | 1pm Crafts<br>2pm Hide & Seek<br>3pm I Spy   |
| <b>Dodge Park Program</b>       | 9am Crafts<br>10am Board Games<br>11am Rockets & Planes<br>1pm Crafts<br>2pm Flag Football<br>3pm Four Square | 9am Crafts<br>10am Legos<br>11am Music Games<br>1pm Crafts<br>2pm Kickball<br>3pm Golf              | 9am Crafts<br>10am Story Time<br>11am Bubbles<br>1pm Crafts<br>2pm Soccer<br>3pm Water Games          | 9am Crafts<br>10am Sandcastles<br>11am Trucks & Cars<br>1pm Crafts<br>2pm Whiffle Ball<br>3pm Parachute | 1pm Crafts<br>2pm Bucket Games<br>3pm Ninja Warrior  |
| <b>West End Park Program</b>    | 9am Crafts<br>10am Horseshoes<br>11am Lawn Games<br>1pm Crafts<br>2pm-4pm Ag in the Park                      | 9am Crafts<br>10am Giant Games<br>11am Tie-Dye<br>1pm Crafts<br>2pm Fitness Games<br>3pm Pickleball | 9am Crafts<br>10am Balloon Games<br>11am Disc Golf<br>1pm Crafts<br>2pm Kick the Can<br>3pm Tennis    | 9am Crafts<br>10am Roller Games<br>11am Hockey<br>1pm Crafts<br>2pm Dodgeball<br>3pm Basketball         | 1pm Crafts<br>2pm Steal the Bacon<br>3pm Sharks&Minnows  |
| <b>Special Events</b>           | <b>Summer Library Reading Program Starts</b>  | <b>1pm Mischief &amp; Magic Show at Library</b>   |   |   | <b>9am—Noon Fishing Tournament at Harris Mill Park</b><br><b>1pm—2pm Art in the Park At Harris Mill Park</b> |

Schedule subject to change due to weather, staffing and participation.

# PARK PROGRAM CALENDAR <sup>7</sup>

|                                 | MONDAY  | TUESDAY   | WEDNESDAY   | THURSDAY  | FRIDAY  |
|---------------------------------|---|---|---|---|---|
| <b>JUNE</b>                     | <b>17</b>   | <b>18</b>   | <b>19</b>   | <b>20</b>   | <b>Field Trip 21</b>                                    |
| <b>Pine Street Park Program</b> | 9am Crafts<br>10am Nature Walk<br>11am Obstacle Course<br>1pm Crafts<br>2pm Scavenger Hunt<br>3pm Tag Games   | 9am Crafts<br>10am Fishing<br>11am Fish Games<br>1pm Crafts<br>2pm Boat Races<br>3pm Relay Races    | 9am Crafts<br>10am Nature Bingo<br>11am Chalk<br>1pm Crafts<br>2pm Capture the Flag<br>3pm Hula Hoops | 9am Crafts<br>10am Frogs<br>11am Parachute<br>1pm Crafts<br>2pm Duck Races<br>3pm Noodle Games          | 1pm Crafts<br>2pm Hide & Seek<br>3pm I Spy              |
| <b>Dodge Park Program</b>       | 9am Crafts<br>10am Board Games<br>11am Rockets & Planes<br>1pm Crafts<br>2pm Flag Football<br>3pm Four Square | 9am Crafts<br>10am Legos<br>11am Music Games<br>1pm Crafts<br>2pm Kickball<br>3pm Golf              | 9am Crafts<br>10am Story Time<br>11am Bubbles<br>1pm Crafts<br>2pm Soccer<br>3pm Water Games          | 9am Crafts<br>10am Sandcastles<br>11am Trucks & Cars<br>1pm Crafts<br>2pm Whiffle Ball<br>3pm Parachute | 1pm Crafts<br>2pm Bucket Games<br>3pm Ninja Warrior     |
| <b>West End Park Program</b>    | 9am Crafts<br>10am Horseshoes<br>11am Lawn Games<br>1pm Crafts<br>2pm-4pm Ag in the Park                      | 9am Crafts<br>10am Giant Games<br>11am Tie-Dye<br>1pm Crafts<br>2pm Fitness Games<br>3pm Pickleball | 9am Crafts<br>10am Balloon Games<br>11am Disc Golf<br>1pm Crafts<br>2pm Kick the Can<br>3pm Tennis    | 9am Crafts<br>10am Roller Games<br>11am Hockey<br>1pm Crafts<br>2pm Dodgeball<br>3pm Basketball         | 1pm Crafts<br>2pm Steal the Bacon<br>3pm Sharks&Minnows |
| <b>Special Events</b>           |   |   | 1pm Smarty Pants and the Big Balloon Show at Library  | 10:30am Yoga in the Park at Harris Mill Park  | 9am—Noon Field Trip to Beaver Dam Lake                  |

| <b>JUNE</b>                     | <b>24</b>   | <b>25</b>  | <b>26</b>   | <b>27</b>   | <b>28</b>   |
|---------------------------------|---|--|---|---|---|
| <b>Pine Street Park Program</b> | 9am Crafts<br>10am Nature Walk<br>11am Obstacle Course<br>1pm Crafts<br>2pm Scavenger Hunt<br>3pm Tag Games   | 9am Crafts<br>10am Fishing<br>11am Fish Games<br>1pm Crafts<br>2pm Boat Races<br>3pm Relay Races | 9am Crafts<br>10am Nature Bingo<br>11am Chalk<br>1pm Crafts<br>2pm Capture the Flag<br>3pm Hula Hoops | 9am Crafts<br>10am Frogs<br>11am Parachute<br>1pm Crafts<br>2pm Duck Races<br>3pm Noodle Games          | 9am Crafts<br>10am Bucket Pong<br>11am Simon Says<br>1pm Crafts<br>2pm Hide & Seek<br>3pm I Spy         |
| <b>Dodge Park Program</b>       | 9am Crafts<br>10am Board Games<br>11am Rockets & Planes<br>1pm Crafts<br>2pm Flag Football<br>3pm Four Square | 9am Crafts<br>10am Legos<br>11am Music Games<br>1pm Crafts<br>2pm Kickball<br>3pm Golf           | 9am Crafts<br>10am Story Time<br>11am Bubbles<br>1pm Crafts<br>2pm Soccer<br>3pm Water Games          | 9am Crafts<br>10am Sandcastles<br>11am Trucks & Cars<br>1pm Crafts<br>2pm Whiffle Ball<br>3pm Parachute | 9am Crafts<br>10am Bowling<br>11am Heads Up<br>1pm Crafts<br>2pm Bucket Games<br>3pm Ninja Warrior      |
| <b>West End Park Program</b>    | 9am Crafts<br>10am Horseshoes<br>11am Lawn Games<br>1pm Crafts<br>2pm-4pm Ag in the Park                      | 9am Crafts<br>10am Giant Games<br>11am Tie-Dye<br>2pm Fitness Games<br>3pm Pickleball            | 9am Crafts<br>10am Balloon Games<br>11am Disc Golf<br>1pm Crafts<br>2pm Kick the Can<br>3pm Tennis    | 9am Crafts<br>10am Roller Games<br>11am Hockey<br>1pm Crafts<br>2pm Dodgeball<br>3pm Basketball         | 9am Crafts<br>10am Minute Games<br>11am SPUD<br>1pm Crafts<br>2pm Steal the Bacon<br>3pm Sharks&Minnows |
| <b>Special Events</b>           |   | 1pm Fun with Waupun Utilities at West End Park<br><br>5pm—6pm STEAM Night At Harris Mill Park    |   | 11am Bluey Song & Dance Show at Library   |   |

Schedule subject to change due to weather, staffing and participation.

# 8 PARK PROGRAM CALENDAR

**\*\*\*July is National Park & Recreation Month\*\*\***

|                                 | MONDAY  | TUESDAY   | WEDNESDAY   | THURSDAY                            | FRIDAY  |
|---------------------------------|---|---|---|-------------------------------------|---|
| <b>JULY</b>                     | <b>1</b>  | <b>2</b>  | <b>3</b>  | <b>4</b>                            | <b>5</b>  |
| <b>Pine Street Park Program</b> | 9am Crafts<br>10am Nature Walk<br>11am Obstacle Course<br>1pm Crafts<br>2pm Scavenger Hunt<br>3pm Tag Games   | 9am Crafts<br>10am Fishing<br>11am Fish Games<br>1pm Crafts<br>2pm Boat Races<br>3pm Relay Races    | 9am Crafts<br>10am Nature Bingo<br>11am Chalk<br>1pm Crafts<br>2pm Capture the Flag<br>3pm Hula Hoops | <b>CLOSED</b><br>Happy 4th of July! | 9am Crafts<br>10am Bucket Pong<br>11am Simon Says<br>1pm Crafts<br>2pm Hide & Seek<br>3pm I Spy         |
| <b>Dodge Park Program</b>       | 9am Crafts<br>10am Board Games<br>11am Rockets & Planes<br>1pm Crafts<br>2pm Flag Football<br>3pm Four Square | 9am Crafts<br>10am Legos<br>11am Music Games<br>1pm Crafts<br>2pm Kickball<br>3pm Golf              | 9am Crafts<br>10am Story Time<br>11am Bubbles<br>1pm Crafts<br>2pm Soccer<br>3pm Water Games          |                                     | 9am Crafts<br>10am Bowling<br>11am Heads Up<br>1pm Crafts<br>2pm Bucket Games<br>3pm Ninja Warrior      |
| <b>West End Park Program</b>    | 9am Crafts<br>10am Horseshoes<br>11am Lawn Games<br>1pm Crafts<br>2pm-4pm Ag in the Park                      | 9am Crafts<br>10am Giant Games<br>11am Tie-Dye<br>1pm Crafts<br>2pm Fitness Games<br>3pm Pickleball | 9am Crafts<br>10am Balloon Games<br>11am Disc Golf<br>1pm Crafts<br>2pm Kick the Can<br>3pm Tennis    |                                     | 9am Crafts<br>10am Minute Games<br>11am SPUD<br>1pm Crafts<br>2pm Steal the Bacon<br>3pm Sharks&Minnows |
| <b>Special Events</b>           | Park Passport & Storybook Walk Starts   | 1pm Live Animal Show at Senior Center   | 1pm Puzzle Race Junior at the Library   |                                     |   |

| <b>JULY</b>                     | <b>8</b>  | <b>9</b>  | <b>10</b>   | <b>11</b>   | <b>Field Trip 12</b>                                   |
|---------------------------------|---|---|---|---|--|
| <b>Pine Street Park Program</b> | 9am Crafts<br>10am Nature Walk<br>11am Obstacle Course<br>1pm Crafts<br>2pm Scavenger Hunt<br>3pm Tag Games   | 9am Crafts<br>10am Fishing<br>11am Fish Games<br>1pm Crafts<br>2pm Boat Races<br>3pm Relay Races    | 9am Crafts<br>10am Nature Bingo<br>11am Chalk<br>1pm Crafts<br>2pm Capture the Flag<br>3pm Hula Hoops | 9am Crafts<br>10am Frogs<br>11am Parachute<br>1pm Crafts<br>2pm Duck Races<br>3pm Noodle Games          |  |
| <b>Dodge Park Program</b>       | 9am Crafts<br>10am Board Games<br>11am Rockets & Planes<br>1pm Crafts<br>2pm Flag Football<br>3pm Four Square | 9am Crafts<br>10am Legos<br>11am Music Games<br>1pm Crafts<br>2pm Kickball<br>3pm Golf              | 9am Crafts<br>10am Story Time<br>11am Bubbles<br>1pm Crafts<br>2pm Soccer<br>3pm Water Games          | 9am Crafts<br>10am Sandcastles<br>11am Trucks & Cars<br>1pm Crafts<br>2pm Whiffle Ball<br>3pm Parachute |  |
| <b>West End Park Program</b>    | 9am Crafts<br>10am Horseshoes<br>11am Lawn Games<br>1pm Crafts<br>2pm-4pm Ag in the Park                      | 9am Crafts<br>10am Giant Games<br>11am Tie-Dye<br>1pm Crafts<br>2pm Fitness Games<br>3pm Pickleball | 9am Crafts<br>10am Balloon Games<br>11am Disc Golf<br>1pm Crafts<br>2pm Kick the Can<br>3pm Tennis    | 9am Crafts<br>10am Roller Games<br>11am Hockey<br>1pm Crafts<br>2pm Dodgeball<br>3pm Basketball         |  |
| <b>Special Events</b>           |   | 1pm Save Water & Electricity Bingo at Senior Center   | 1pm Science Heroes: Adventure Of the Lost Treasure at Library   | 7:30pm Movie Night in the Park at Harris Mill Park  | 9am—4pm Field Trip to Shalom Wildlife Zoo in West Bend |



# PARK PROGRAM CALENDAR 9

|                                 | MONDAY  | TUESDAY   | WEDNESDAY   | THURSDAY  | FRIDAY  |
|---------------------------------|---|---|---|---|---|
| <b>JULY</b>                     | <b>15</b>   | <b>16</b>   | <b>17</b>   | <b>18</b>   | <b>19</b>   |
| <b>Pine Street Park Program</b> | 9am Crafts<br>10am Nature Walk<br>11am Obstacle Course<br>1pm Crafts<br>2pm Scavenger Hunt<br>3pm Tag Games   | 9am Crafts<br>10am Fishing<br>11am Fish Games<br>1pm Crafts<br>2pm Boat Races<br>3pm Relay Races    | 9am Crafts<br>10am Nature Bingo<br>11am Chalk<br>1pm Crafts<br>2pm Capture the Flag<br>3pm Hula Hoops | 9am Crafts<br>10am Frogs<br>11am Parachute<br>1pm Crafts<br>2pm Duck Races<br>3pm Noodle Games          | 9am Crafts<br>10am Bucket Pong<br>11am Simon Says   |
| <b>Dodge Park Program</b>       | 9am Crafts<br>10am Board Games<br>11am Rockets & Planes<br>1pm Crafts<br>2pm Flag Football<br>3pm Four Square | 9am Crafts<br>10am Legos<br>11am Music Games<br>1pm Crafts<br>2pm Kickball<br>3pm Golf              | 9am Crafts<br>10am Story Time<br>11am Bubbles<br>1pm Crafts<br>2pm Soccer<br>3pm Water Games          | 9am Crafts<br>10am Sandcastles<br>11am Trucks & Cars<br>1pm Crafts<br>2pm Whiffle Ball<br>3pm Parachute | 9am Crafts<br>10am Bowling<br>11am Heads Up   |
| <b>West End Park Program</b>    | 9am Crafts<br>10am Horseshoes<br>11am Lawn Games<br>1pm Crafts<br>2pm-4pm Ag in the Park                      | 9am Crafts<br>10am Giant Games<br>11am Tie-Dye<br>1pm Crafts<br>2pm Fitness Games<br>3pm Pickleball | 9am Crafts<br>10am Balloon Games<br>11am Disc Golf<br>1pm Crafts<br>2pm Kick the Can<br>3pm Tennis    | 9am Crafts<br>10am Roller Games<br>11am Hockey<br>1pm Crafts<br>2pm Dodgeball<br>3pm Basketball         | 9am Crafts<br>10am Minute Games<br>11am SPUD  |
| <b>Special Events</b>           |   |   |   | 5pm—6pm Ice Cream Social at West End Park   | 1pm—Giant Slip & Slide at Tanner Park<br>1pm—2pm Art in the Park at Harris Mill Park<br>4pm-6pm Carnival at Library |
| <b>JULY</b>                     | <b>22</b>   | <b>23</b>   | <b>24</b>   | <b>25</b>   | <b>26</b>   |
| <b>Pine Street Park Program</b> | 9am Crafts<br>10am Nature Walk<br>11am Obstacle Course<br>1pm Crafts<br>2pm Scavenger Hunt<br>3pm Tag Games   | 9am Crafts<br>10am Fishing<br>11am Fish Games<br>1pm Crafts<br>2pm Boat Races<br>3pm Relay Races    | 9am Crafts<br>10am Nature Bingo<br>11am Chalk<br>1pm Crafts<br>2pm Capture the Flag<br>3pm Hula Hoops | 9am Crafts<br>10am Frogs<br>11am Parachute<br>1pm Crafts<br>2pm Duck Races<br>3pm Noodle Games          | 9am Crafts<br>10am Bucket Pong<br>11am Simon Says   |
| <b>Dodge Park Program</b>       | 9am Crafts<br>10am Board Games<br>11am Rockets & Planes<br>1pm Crafts<br>2pm Flag Football<br>3pm Four Square | 9am Crafts<br>10am Legos<br>11am Music Games<br>1pm Crafts<br>2pm Kickball<br>3pm Golf              | 9am Crafts<br>10am Story Time<br>11am Bubbles<br>2pm Soccer<br>3pm Water Games                        | 9am Crafts<br>10am Sandcastles<br>11am Trucks & Cars<br>1pm Crafts<br>2pm Whiffle Ball<br>3pm Parachute | 9am Crafts<br>10am Bowling<br>11am Heads Up   |
| <b>West End Park Program</b>    | 9am Crafts<br>10am Horseshoes<br>11am Lawn Games  | 9am Crafts<br>10am Giant Games<br>11am Tie-Dye<br>1pm Crafts<br>2pm Fitness Games<br>3pm Pickleball | 9am Crafts<br>10am Balloon Games<br>11am Disc Golf<br>1pm Crafts<br>2pm Kick the Can<br>3pm Tennis    | 9am Crafts<br>10am Roller Games<br>11am Hockey<br>1pm Crafts<br>2pm Dodgeball<br>3pm Basketball         | 9am Crafts<br>10am Minute Games<br>11am SPUD  |
| <b>Special Events</b>           | 1pm—4pm Ag in the Park Celebration & Farm Animal Petting Zoo at West End Park                                 | 5pm—6pm STEAM Night At Harris Mill Park   | 1pm Fun with Waupun Utilities at Dodge Park   | 10:30am Yoga in the Park at Harris Mill Park  | 1pm—Pool Olympics at Waupun Family Aquatic Center   |

Schedule subject to change due to weather, staffing and participation.

# PARK PROGRAM CALENDAR

|                                 | MONDAY  | TUESDAY   | WEDNESDAY   | THURSDAY  | FRIDAY  |
|---------------------------------|---|---|---|---|---|
| <b>JULY</b>                     | <b>29</b>   | <b>30</b>   | <b>31</b>   | <b>AUGUST 1</b>   | <b>2</b>  |
| <b>Pine Street Park Program</b> | 9am Crafts<br>10am Nature Walk<br>11am Obstacle Course<br>1pm Crafts<br>2pm Scavenger Hunt<br>3pm Tag Games   | 9am Crafts<br>10am Fishing<br>11am Fish Games<br>1pm Crafts<br>2pm Boat Races<br>3pm Relay Races    | 9am Crafts<br>10am Nature Bingo<br>11am Chalk<br>1pm Crafts<br>2pm Capture the Flag<br>3pm Hula Hoops | 9am Crafts<br>10am Frogs<br>11am Parachute<br>1pm Crafts<br>2pm Duck Races<br>3pm Noodle Games          | 9am Crafts<br>10am Bucket Pong<br>11am Simon Says<br>1pm Crafts<br>2pm Hide & Seek<br>3pm I Spy         |
| <b>Dodge Park Program</b>       | 9am Crafts<br>10am Board Games<br>11am Rockets & Planes<br>1pm Crafts<br>2pm Flag Football<br>3pm Four Square | 9am Crafts<br>10am Legos<br>11am Music Games<br>1pm Crafts<br>2pm Kickball<br>3pm Golf              | 9am Crafts<br>10am Story Time<br>11am Bubbles<br>1pm Crafts<br>2pm Soccer<br>3pm Water Games          | 9am Crafts<br>10am Sandcastles<br>11am Trucks & Cars<br>1pm Crafts<br>2pm Whiffle Ball<br>3pm Parachute | 9am Crafts<br>10am Bowling<br>11am Heads Up<br>1pm Crafts<br>2pm Bucket Games<br>3pm Ninja Warrior      |
| <b>West End Park Program</b>    | 9am Crafts<br>10am Horseshoes<br>11am Lawn Games<br>1pm Crafts<br>2pm-4pm Ag in the Park                      | 9am Crafts<br>10am Tie-Dye<br>11am Giant Games<br>1pm Crafts<br>2pm Fitness Games<br>3pm Pickleball | 9am Crafts<br>10am Balloon Games<br>11am Disc Golf<br>1pm Crafts<br>2pm Kick the Can<br>3pm Tennis    | 9am Crafts<br>10am Roller Games<br>11am Hockey<br>1pm Crafts<br>2pm Dodgeball<br>3pm Basketball         | 9am Crafts<br>10am Minute Games<br>11am SPUD<br>1pm Crafts<br>2pm Steal the Bacon<br>3pm Sharks&Minnows |
| <b>Special Events</b>           |   |   |   | <b>5pm Rock Scavenger Hunt at Pine Street Park</b>  | <b>1pm—2pm Art in the Park at Harris Mill Park</b>  |

| <b>AUGUST</b>                   | <b>5</b>  | <b>6</b>  | <b>7</b>  | <b>8</b>  | <b>Last Day Picnic 9</b>                          |
|---------------------------------|---|---|---|---|---|
| <b>Pine Street Park Program</b> | 9am Crafts<br>10am Nature Walk<br>11am Obstacle Course<br>1pm Crafts<br>2pm Scavenger Hunt<br>3pm Tag Games   | 9am Crafts<br>10am Fishing<br>11am Fish Games<br>1pm Crafts<br>2pm Boat Races<br>3pm Relay Races    | 9am Crafts<br>10am Nature Bingo<br>11am Chalk<br>1pm Crafts<br>2pm Capture the Flag<br>3pm Hula Hoops | 9am Crafts<br>10am Frogs<br>11am Parachute<br>1pm Crafts<br>2pm Duck Races<br>3pm Noodle Games          | 9am Crafts<br>10am Bucket Pong<br>11am Simon Says |
| <b>Dodge Park Program</b>       | 9am Crafts<br>10am Board Games<br>11am Rockets & Planes<br>1pm Crafts<br>2pm Flag Football<br>3pm Four Square | 9am Crafts<br>10am Legos<br>11am Music Games<br>1pm Crafts<br>2pm Kickball<br>3pm Golf              | 9am Crafts<br>10am Story Time<br>11am Bubbles<br>1pm Crafts<br>2pm Soccer<br>3pm Water Games          | 9am Crafts<br>10am Sandcastles<br>11am Trucks & Cars<br>1pm Crafts<br>2pm Whiffle Ball<br>3pm Parachute | 9am Crafts<br>10am Bowling<br>11am Heads Up       |
| <b>West End Park Program</b>    | 9am Crafts<br>10am Horseshoes<br>11am Lawn Games<br>1pm Crafts<br>2pm-4pm Ag in the Park                      | 9am Crafts<br>10am Giant Games<br>11am Tie-Dye<br>1pm Crafts<br>2pm Fitness Games<br>3pm Pickleball | 9am Crafts<br>10am Balloon Games<br>11am Disc Golf<br>1pm Crafts<br>2pm Kick the Can<br>3pm Tennis    | 9am Crafts<br>10am Roller Games<br>11am Hockey<br>1pm Crafts<br>2pm Dodgeball<br>3pm Basketball         | 9am Crafts<br>10am Minute Games<br>11am SPUD      |
| <b>Special Events</b>           |   | <b>5pm—6pm STEAM Night At Harris Mill Park</b>  |   |   | <b>1pm—Park Picnic at Dodge Park</b>              |

# PARK PROGRAM—DODGE PARK



WAUPUN  
CITY OF SCULPTURE

## WAUPUN PARK PROGRAM

CRAFTS

BOARD GAMES

BUBBLES

LEGOS

SPORTS

PUZZLES

STORY TIME

# DODGE PARK

518 S. MADISON STREET

JUNE 3 - AUGUST 9

MONDAY - FRIDAY

9AM - NOON & 1PM - 4PM



SCAN HERE!

ALL PARK ACTIVITIES INCLUDED IN \$10 REGISTRATIONS FEE

# 12 **PARK PROGRAM—PINE ST. PARK**

**WAUPUN PARK PROGRAM**

## **PINE STREET PARK**

**404 PINE STREET**

**JUNE 3 - AUGUST 9**

**MONDAY - FRIDAY**

**9AM - NOON & 1PM - 4PM**

**ARTS & CRAFTS  
GAMES  
CHALK  
BIRDPWATCHING  
NATURE BINGO  
OBSTACLE COURSES**

**NATURE WALKS  
SCAVENGER HUNTS  
FISHING  
FROG CATCHING  
BOAT RACES**

**SCAN  
ME**



**WAUPUN**  
CITY OF SCULPTURE

**ALL PARK ACTIVITIES INCLUDED IN \$10 REGISTRATION FEE**

# PARK PROGRAM—WEST END PARK

WAUPUN PARK PROGRAM

# WEST END PARK



WAUPUN  
CITY OF SCULPTURE

200 Beaver Dam Street

**JUNE 3 - AUGUST 9**

**MONDAY - FRIDAY**

**9AM - NOON & 1PM - 4PM**

**AG IN THE PARK**



**FITNESS**

**GIANT GAMES**

**DODGEBALL**



**ROLLER GAMES**

**MINUTE-TO-WIN-IT**



**CRAFTS**

**PICKLEBALL**



All park activities included in \$10 registration fee

# PARK PROGRAM

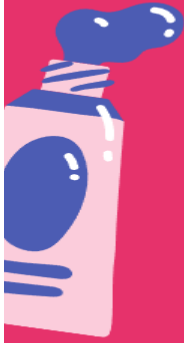
WAUPUN PARK PROGRAM

# ARTS & CRAFTS

9:00am & 1:00pm

Monday - Friday  
June 3 - August 9

Dodge Park  
Pine Street Park  
West End Park



**WAUPUN PARK PROGRAM**  
**SPORTS**

**DODGE PARK**      **WEST END PARK**

CHECK OUT OUR CALENDAR ON FACEBOOK  
"WAUPUN RECREATION DEPARTMENT"

**Waupun Park Program**

**Pickleball**



**West End Park**  
**Tuesdays**  
**3:00pm**

Questions? Call the Waupun Recreation Department at 920-324-7930.

Did you know that there are outdoor pickleball courts at West End Park and at the Waupun Area Jr./Sr. High School?

# ART IN PARK



WAUPUN PARK PROGRAM

PARTNERED WITH: IMAGINE THAT!

ART STUDIO

## ART IN THE PARK



SCAN ME!

**HARRIS MILL PARK**

300 N. MILL STREET, WAUPUN

**1PM - 2PM**

- **FRIDAY, JUNE 14**
- **FRIDAY, JULY 19**
- **FRIDAY, AUGUST 2**

All activities included in \$10 registration fee!  
Register at [cityofwaupun.org](http://cityofwaupun.org).



# STEAM NIGHT

17



Scan me

# STEAM NIGHT

WITH IMAGINE THAT!

JUNE 25 | JULY 23 | AUGUST 6  
5-6 PM

Harris Mill Park  
300 N Mill Street  
Waupun, WI 53963



**WAUPUN**  
CITY OF SCULPTURE

**IMAGINE  
THAT!**  
ART STUDIO

[www.imaginethatartstudiowaupun.com](http://www.imaginethatartstudiowaupun.com)

All activities included in \$10 registration fee! Register at [cityofwaupun.org](http://cityofwaupun.org).

WAUPUN PARK PROGRAM

# AG IN THE PARK



**MONDAYS**  
**JUNE 3 - AUGUST 5**  
**WEST END PARK**  
**2:00PM - 4:00PM**



- June 3 - Strawberry Fun
- June 10 - Hooray for Honey
- June 17 - Things That Grow
- June 24 - Cheese, Please
- July 1 - Fruits & Veggies Galore
- July 8 - I Scream for Ice Cream
- July 15 - Ag in the Park
- July 22 - Farm Animals
- July 29 - Tree-mendous Trees
- August 5 - Harvest Time



All park activities included in \$10 registration fee

# PARK PROGRAM

19



Waupun Park Program

# TAG GAMES



WAUPUN  
CITY OF SCULPTURE

Let's play some TAG!

Freeze Tag, Blob Tag, Turtle Tag, Everybody's It  
Tag, Ball Tag, Pizza Tag, Noodle Tag & MORE!

**PINE STREET PARK**  
**MONDAYS @ 3PM**



# PARK PROGRAM

## WAUPUN PARK PROGRAM

# WATER GAMES



Wear clothes that can get wet and cool off by playing water games with us!

**DODGE PARK | WEDNESDAYS | 3PM**

All park activities included in \$10 registration fee.  
Register online at [www.cityofwaupun.org](http://www.cityofwaupun.org)

# BALLOON GAMES

West End Park  
Wednesdays  
10 am



# PARK PROGRAM

21

waupun park program

## LEGOS IN THE PARK

bring your own  
legos or use ours

DODGE PARK  
TUESDAYS  
10:00AM



WAUPUN  
CITY OF SCULPTURE

WAUPUN PARK PROGRAM

## NATURE WALK

PINE STREET PARK

MONDAYS AT 10:00AM

Join us to learn about nature by taking a stroll down the Pine Street Park path and exploring the Rock River.

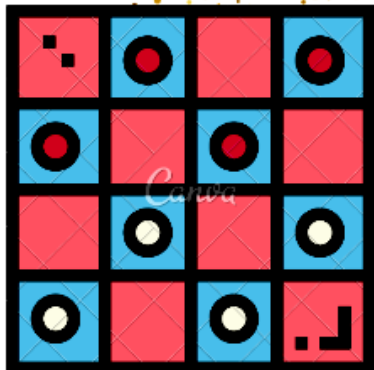
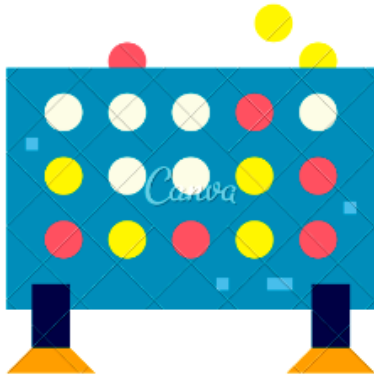
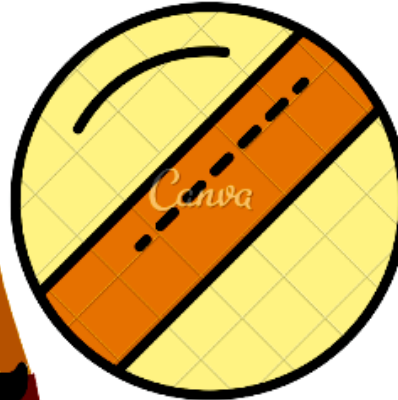


WAUPUN  
CITY OF SCULPTURE

# PARK PROGRAM

## WAUPUN PARK PROGRAM

# GIANT GAMES

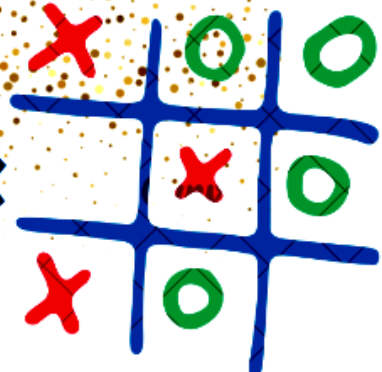


**WAUPUN**  
CITY OF SCULPTURE

**WEST END PARK**

**TUESDAYS**

**10:00AM**



All activities included in \$10 registration fee!  
Register at [cityofwaupun.org](http://cityofwaupun.org).

# PARK PROGRAM

23

## WAUPUN PARK PROGRAM

# NOODLE GAMES

Join us for some FUN games using pool noodles!



**PINE STREET PARK  
THURSDAYS  
3PM**



WAUPUN  
CITY OF SCULPTURE

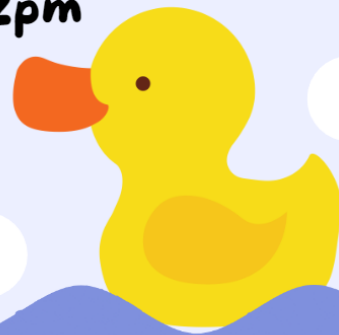
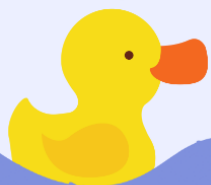
All activities included in \$10 registration fee.  
Register online at [www.cityofwaupun.org](http://www.cityofwaupun.org).

## Waupun Park Program

# Duck Races

Pine Street Park on Thursdays at 2pm

Use one of our rubber duckies to race down the Rock River. Come see if your ducky is lucky!



# PARK PROGRAM

## WAUPUN PARK PROGRAM

# Storytime in the Park

JOIN US FOR A STORY IN THE  
PARK AND AN ACTIVITY ABOUT  
THE STORY!

### \*SPECIAL GUEST READERS\*

Week 1: *Summer Fun* by Anita Bijsterbosch

Week 2: *Lucky Duck* by Greg Pizzoli

Week 3: *You Must Bring a Hat!* by Simon Philip

Week 4: *For Me?* by Harmen van Straaten

Week 5: *The Fish with the Deep See Smile* by Margaret Wise Brown

Week 6: *How to Catch a Unicorn* by Adam Wallace & Andy Elkerton

Week 7: *Mingo the Flamingo* by Pete Oswald & Justin K. Thompson

Week 8: *Wacky Wednesday* by Dr. Suess

Week 9: *The Bog Baby* by Jeanne Willis

Week 10: *Nelly's Grannies* by Elizabeth Slote



**DODGE PARK**  
**WEDNESDAYS**  
**10:00AM**

**ALL ACTIVITIES INCLUDED IN \$10 REGISTRATION FEE!**  
**REGISTER AT CITYOFWAUPUN.ORG.**



# PARK PROGRAM—BIKE RODEO

25

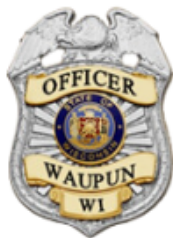
CITY OF WAUPUN

# BIKE RODEO



**THURSDAY, JUNE 6  
1PM - 2:30PM  
WAUPUN ICE ARENA**

**FREE EVENT FOR AGES 12 AND UNDER.  
PLEASE BRING YOUR BIKE AND HELMET.  
PARENT/GUARDIAN MUST COMPLETE A WAIVER.  
FUN BIKE ACTIVITIES AND PRIZES.**



**CO - SPONSORED BY:  
WAUPUN PARK PROGRAM  
WAUPUN POLICE DEPARTMENT  
WAUPUN KIWANIS CLUB**

# PARK PROGRAM SPECIAL EVENTS

WAUPUN PARK PROGRAM

Friday, July 5  
1:00pm

# PARK BINGO

HARRIS MILL PARK



WAUPUN PARK PROGRAM

# ROCK SCAVENGER HUNT

THURSDAY, AUGUST 1

5:00PM

PINE STREET PARK

SPECIAL PRIZES THAT ROCK!



# PARK PROGRAM

27

## WAUPUN PARK PROGRAM



Yoga for all ages!

**Harris Mill Park**

Thursday, June 20 at 10:30am

Thursday, July 25 at 10:30am

# Yoga in the Park

## Waupun Park Program

# Tie-Dye

Join us to tie-dye in the park! Bring any piece of pre-washed, white, cotton clothing to make your own unique tie-dye creation. Bring your socks, t-shirt, bandana, hat, etc. Fun for everyone!



**When: Tuesdays at 11am**

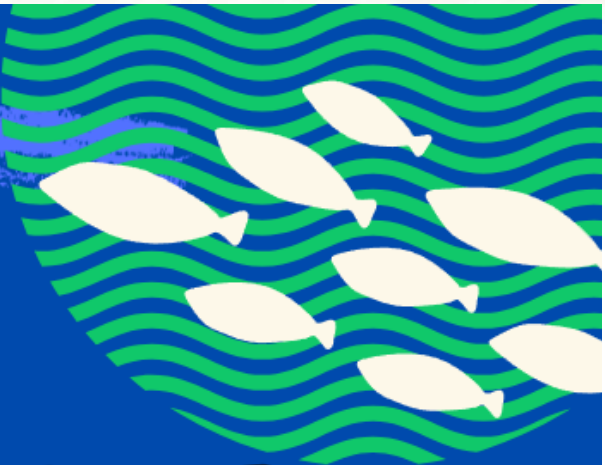
**June 4 - August 6**

**Where: West End Park**



**WAUPUN PARK PROGRAM**

**2024  
FISHING  
TOURNAMENT**



**WHEN: FRIDAY, JUNE 14**  
**Registration at 9am**  
**Tournament 9:30am - 11:30am**  
**Prizes & Lunch at Noon**

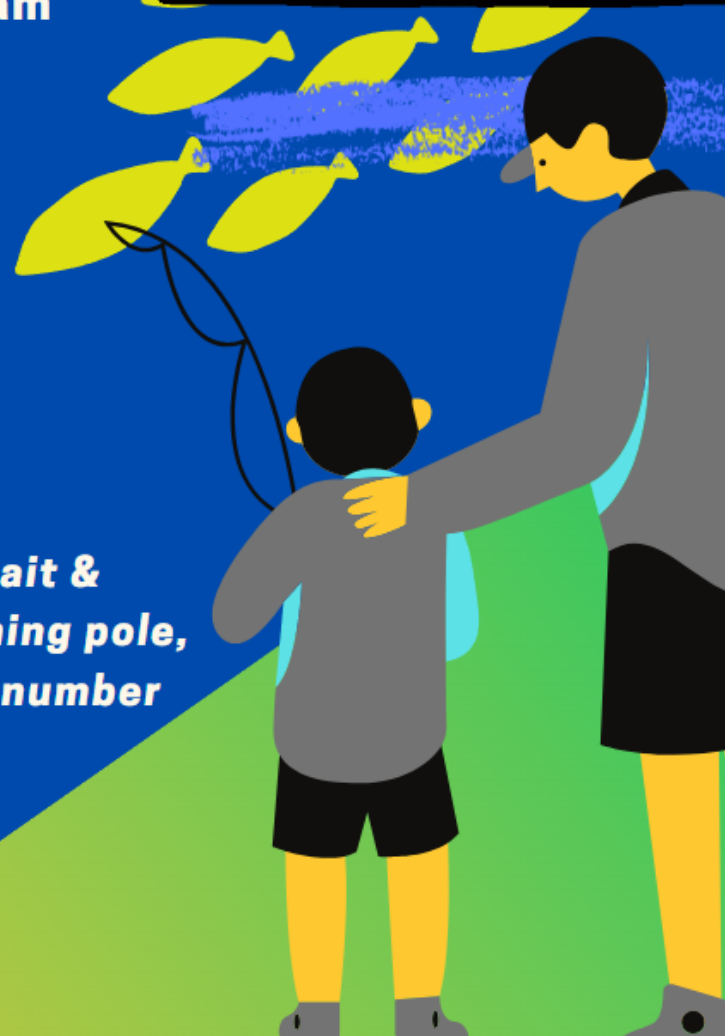
Sponsored by City of  
Waupun, Holliday Food &  
Sport, Culvers, Pizza Ranch

**WHERE: HARRIS MILL PARK**

**AGE BRACKETS:**

- Kids 7—10**
- Kids 11—14**
- Gandparents (Ages 50+)**

**BRING:** *Your own fishing pole, bait & tackle. If you do not have a fishing pole, the Park Program has a limited number of poles and tackle that can be borrowed.*



Questions? Contact the Waupun  
Recreation Department at  
(920) 324-7930

# PARK PROGRAM—POOL OLYMPICS



**WAUPUN**  
CITY OF SCULPTURE

**WAUPUN PARK PROGRAM**

*Waupun Family Aquatic Center*

# OLYMPICS

**FRIDAY, JULY 26**

**1:30pm - 3:00pm**

- **GAMES**
- **RACES**
- **PRIZES**

**AT THE**

*pool*

**\$6 admission or  
use season pass**

Questions? Call the Waupun Recreation Department at (920) 324-7930

# 3 PARK PROGRAM—PICNIC



**YOU'RE INVITED!**  
**JOIN US FOR A**  
**PICNIC in**  
**the PARK**

Join us on the last day of the Waupun Park Program for pizza, prizes and games! This will be an afternoon filled with fun! Giant Fire Truck Sprinkler! Wear your swimsuit or clothes that can get wet! **FREE!**



**When:** Friday, August 9 @ 1:30pm

**Where:** Dodge Park  **WAUPUN**  
CITY OF SCULPTURE

# PARK PROGRAM TRIPS

31

WAUPUN PARK PROGRAM



WAUPUN  
CITY OF SCULPTURE

# FIELD TRIP

**FRIDAY, JUNE 21 {9AM - NOON}**

**CANOEING, KAYAKING, PADDLE BOARDING  
AT WATERWOKS PARK ON BEAVER DAM LAKE**

**\$10**

PER PERSON

\*Register online  
Scan QR Code



SCAN ME

Bus leaves at 9am from the Waupun Senior Center

Bus returns at Noon at the Waupun Senior Center

Registration Deadline: Noon on Thursday, June 20



WAUPUN  
CITY OF SCULPTURE

WAUPUN PARK PROGRAM

# FIELD TRIP

**SHALOM WILDLIFE ZOO, WEST BEND**

**Friday, July 12**

Bus leaves Waupun Senior Center at 9AM

Bus returns to Waupun Senior Center at 4PM

\$10/person, register online or scan QR

Registration Deadline: Noon on July 11

Questions? Call Rec. Dept. at 920-324-7930

SCAN  
ME! >>>



# JULY IS NATIONAL PARK & RECREATION

32



WAUPUN  
CITY OF SCULPTURE

WAUPUN PARK PROGRAM

# CITY PARK PASSPORT

A scavenger hunt to discover the City of Waupun parks. Pick up your passport at the Waupun Senior Center to play. 1 Passport/household.

PARK PASSPORT PICKUP STARTS ON JULY 1

PARK PASSPORT SUBMISSION DEADLINE JULY 31

QUESTIONS? CALL THE WAUPUN RECREATION DEPARTMENT AT (920) 324-7930.

JULY IS NATIONAL PARK & RECREATION MONTH EVENT



WAUPUN PARK PROGRAM



WAUPUN  
CITY OF SCULPTURE

# Storybook Walk

Read the story while walking the Pine Street Park path to participate in our Park Program Storybook Walk. Free family activity during the month of July.



**Book:** *Play Outside!*  
By Laurent Moreau

(Look on the back of each page for a list of animals to find. Over 250 animals are hidden in this book!)

July is National Park & Recreation Month Event



# JULY IS NATIONAL PARK & RECREATION

33

Waupun Recreation Department Presents:

## Movie Night in the Park

Featuring: Migration, PG, 82 min.

THURSDAY, JULY 11 AT 7:30 PM  
HARRIS MILL PARK, 300 N MILL STREET, WAUPUN

FREE  
EVENT FOR  
ALL AGES



Bring your blanket or lawn chair and snacks to watch a BIG screen movie in the park!



WAUPUN  
CITY OF SCULPTURE

JULY IS NATIONAL PARK & RECREATION MONTH

WAUPUN PARK PROGRAM



WAUPUN  
CITY OF SCULPTURE

## ICE CREAM SOCIAL

Join us for an ice cream treat to celebrate National Park & Recreation Month!



WEST END PARK  
THURSDAY, JULY 18  
5:00 - 6:00PM



JULY IS NATIONAL PARK & RECREATION MONTH EVENT

# WAUPUN FINE ARTS

## CONCERTS IN THE PARK

Thursday evenings in July

West End Park (200 Beaver Dam Street, Waupun)

Rain Venue: Waupun Ice Arena

Concessions at 5:30pm, Concerts at 6:30pm



- **July 4 - Cajun Strangers**

The Cajun Strangers are an award-winning band from Madison, Wisconsin, that plays traditional Cajun dance music, as you would hear down in Southwest Louisiana and East Texas. A Madison institution, they've been playing dances, festivals, events, and backyards for nearly 20 years.

- **July 11 - Del Ray's**

The "DEL RAY'S" are all former members of the "OUTTA STYLE SHOW BAND". The "DEL RAY'S" are a four-piece band that has been performing together since the late 1970's. The "DEL RAY'S" perform a variety of rock & roll from the 50's, 60's, and the 70's.

- **July 18 - Remington's Ride**

Remington's Ride is a Wisconsin-based band of veteran musicians bringing the great sounds of Vintage Western Swing, roots country, Americana, rockabilly, and honky tonk to a whole new generation of music fans. Bring your lawn chair or blanket. Free will offering.

- **July 25 - Madpolecats**

The Madpolecats unique form of entertainment was developed by fusing together traditional bluegrass instruments with reggae/ska/punk influences, making rastabilly music or, skunkgrass. This family band has an arsenal of instruments, and is made of musicians who have played together at roadhouse bars, churches, music festivals, concert halls, fund raising events, benefits, weddings, wakes, and more!

## ARTS & CRAFTS FAIR

**Saturday, August 3 at West End Park from 10am—3pm**

## CONTACT

Mail—P.O. Box 489, Waupun, WI. 53963

Website—<https://waupunfinearts.org/contact/>

Monthly Meetings: 2nd Monday of the Month, 6:00pm, Waupun Public Library

# KNITTING

35

Calling all knitters!

## Knit-Wits

We are a social knitting group that works on personal projects while chit chatting. New members are always welcome. We will help with projects, teach knitting or crocheting, how to read patterns etc., but we are not instructors. Bring your own yarn and knitting needles and join us for some fun conversations!

**WEDNESDAYS AT 6:00PM**

**WAUPUN SENIOR CENTER/RECREATION DEPARTMENT  
301 E. MAIN STREET**



**WAUPUN**  
CITY OF SCULPTURE

# CRAFT CENTER

The Waupun Craft Center meets in the lower level (use north entrance) of the Emmanuel Reformed Church, 400 W. Brown St., Waupun, on Thursdays from 9-11 a.m. We offer various craft classes, including quilting, knitting, crochet, needlework, and lots more. Over the past years the group has made lot of charity quilts and 48 Quilts of Valor for local veterans. Many of our members do "Hodge Podge" where they work on their own project in the fellowship with other members.

Membership includes all classes offered and is \$25 per year (September through April). For more information or a schedule of classes contact [waupuncraftcenter@yahoo.com](mailto:waupuncraftcenter@yahoo.com) or check out the Waupun Craft Center Facebook page.

**Contact:** Shirley VerHage 920-948-8532

# GYMNASTICS

Waupun Gymnastics Club is a youth program that offers a variety of recreational and competitive gymnastics for ages 2 years old and up.

We love our community and this sport, and are committed to promoting gymnastics while also encouraging the personal growth and development of our area's young people. It's more than just a sport!

## SESSIONS

Summer Session:

Weeks of June 10th - July 29th  
(8 week session)

Registration will open Tuesday May 28 t 8 am to current students and Wednesday May 29th t 8 am to the public

Fall Session:

Weeks of August 26th - October 28th

Registration will open August 5th t 8 am to current students and August 6th t 8 am to the public

\* Discounts given for multiple family members

## BIRTHDAY PARTIES/ EVENTS

We also offer gym rental for birthday parties / events / family get-togethers.

2 hours of open gym / free play for up to 15 kids, including birthday boy / girl. Hosts can bring in their own food, desserts, refreshments and decorations.

Saturdays only; 12:00pm or 2:30pm

Cost: \$175

Non-refundable deposit of \$75 to book date, remaining balance due day of event. Current (active within last year) WGC students get a \$25 discount

## CONTACT

[www.waupungymnastics.org](http://www.waupungymnastics.org)

16 Fond du Lac St. Waupun

Class, Competitive Team, or Open Gym questions -

[waupungymnastics@gmail.com](mailto:waupungymnastics@gmail.com)

Birthday Parties or Events - [wgcevents16@gmail.com](mailto:wgcevents16@gmail.com)

920-260-8207

### PRESCHOOL

## Open Gym!

-EVERY FRIDAY

-9AM - 11am

-\$5 / KID FOR AGES 1 THROUGH  
ENTERING KINDERGARTEN

-UNDER 1 FREE

-PARENT SUPERVISED



### PARENTS NIGHT OUT

## Open Gym!

-2 Friday's a month

-6pm to 9pm

-\$10 / kid for ages K through 6th

-supervised by WGC (parent drop off)

**EVERY PNO ATTENDEE MUST**

**PRE- REGISTER ONLINE.**

For safety reasons, we are now capping attendance at 60 students.

## WOMENS SOFTBALL

Waupun Women's Softball League is designed with fun in mind. Moderate Pitch. We encourage interested players of all skill levels to join us on the field. Bring friends & family to cheer at games. See you all at the ballpark!

**Who:** High school graduates and older

**When:** Thursday nights - June to early August

**Where:** McCune Park

**Fee:** \$25/Player

**Facebook:** Waupun Women's Softball Fans

**Contact:** Caitlin Kempen at (920) 379-6985 or waupunwomenssoftball@gmail.com

## PICKLEBALL

A fun, easy-to-learn game that relates to tennis, badminton, and ping pong. Played on a court smaller than a tennis court.

**Where:** June– September

Waupun Junior/Senior High School Tennis Courts

Also, West End Park as two pickleball courts that can be used anytime during the day.



## SAND VOLLEYBALL

Adult sand volleyball is co-ed and played on an outside sand court for anyone who wants to have fun and have a night out. Come enjoy the fun!!

**Who:** Anyone over 18, Minimum 6 people per team

**When:** Tuesdays 6:30pm and 7:30pm, June-August

**Where:** McCune Park

**Fee:** \$90.00/team

**Contact:** Holly Marwitz at (920) 948-8500

## HORSESHOES

Waupun Horseshoe League consists of 2-man teams each playing 4 games per night with 30 horseshoes being thrown each game. Singles tournament is held in August.

**Who:** Over 18 years old (Co-Ed)

**When:** June-August

**Time:** 6:00pm, Wednesday nights

**Where:** West End Park

**Contact:** Trevis Fischer at (920) 597-0269



# SENIOR CENTER

## HELLO!

The Waupun Senior Center is a great place for people age 50 and over or married to someone age 62+ and over to meet new people, try new things, and stay active.

Volunteers are also welcome, whether it is for a one-time event or on a weekly basis. The center is open to all seniors, whether you live in Waupun or surrounding communities. Each month a newsletter will be available with a detailed activity calendar. Please join us for some fun and conversations.

**Address:** 301 E. Main Street, Waupun, WI 53963

**Phone:** (920) 324-7930

**Hours:** 8:00AM—4:00PM Mondays, Wednesdays, and Thursdays, 8:00AM—2:00PM Tuesdays and Fridays

**Email:** parks@cityofwaupun.org



## NEWSLETTER

The Waupun Senior Center produces a 12 page full color newsletter each month full of activities, events and services. Printed copies are available at the Senior Center and placed around Waupun. Email parks@cityofwaupun.org to be placed on the email newsletter list.



## SENIOR CENTER LUNCH

Catered by Feil's in Randolph. Entrée, fruit, vegetable, bread, dessert and milk included with all meals. Brought to you by Fond du Lac County Senior Dining Program.

**Who:** 60 years or older, or married to someone age 60 or older

**When:** Monday-Wednesday

**Suggested Donation:** \$5.00

**Registration:** Required one business day in advance by noon by calling (920) 324-7930 or registering at the Senior Center front desk. Great food, great company, great place!

## MOBILE MEALS

The purpose of the mobile meal program is to provide one nutritionally balanced hot meal for five days per week on a temporary or permanent basis to homebound individuals. To be eligible to receive delivered mobile meals, individuals must be 60 years of age or older or married to someone 60 years of age or over, be frail or homebound, unable to cook for themselves or have someone in home to assist them in cooking. To see if you or someone you know are eligible please call 920-929-3466 (FdL County Residents) or 920-386-3580 (Dodge County Residents).

## FOOT CARE CLINIC

Professional foot care services include: a thorough lower leg and foot assessment, toenail trimming, reducing of calluses and/or corns, thinning or debridement of thick toenails, moisturizing lower leg and foot massage by Keren from Lotus Foot Care, LLC. Please bring a bath towel to your appointment.

**Fee:** \$35/30 minute appointment or until foot care is complete. \$40 new patients.

Call 324-7930 to schedule your appointment. Appointments can be made months in advance.

## ACTIVITIES

There are lots of things going on daily, weekly, and monthly at the Waupun Senior Center. The Waupun Senior Center activity schedule does change from time to time depending on the weather, interest, and available space. We have several activities that are consistently ran on a weekly basis. These activities are highlighted below. If you have questions about the Senior Center or activity schedule, please feel free to ask Rachel Kaminski, Recreation Program Director. Stop by her office, call 920-324-7930, or email her at [parks@cityofwaupun.org](mailto:parks@cityofwaupun.org),

## YOGA

Yoga Stretch is designed to move your whole body through a complete series of seated and standing yoga poses and stretches. Chair support is always available to safely perform poses designed to increase flexibility, balance and range of movement. Beginners can join anytime. It's a 45 minute class. Floor poses will not be performed. Please wear comfortable clothing and tennis shoes. **FREE!** Try it!  
**When:** Mondays & Thursdays at 10:30am

## CARDS

Several card games are played each week at the Waupun Senior Center.  
**Euchre:** Mondays at 1:00pm—\$1 to play  
**Hand & Foot:** Tuesdays at 9:00am—Free to play  
**Jack of Diamonds Sheephead:** Wednesdays at 1:00pm—\$1 to play  
**Black Queens Sheephead:** Thursdays at 1:00pm—\$1 to play  
**Se7ens:** Fridays at 9:00am—Free to play

## KNIT-WITS

Are you a Knit-Wit? Do you love knitting? We do too! This is a social knitting group that spends most of the time working on personal projects and chit chatting. New members are always welcomed. We will help with projects and we will teach knitting or crocheting and how to read patterns etc., but we are not instructors. Bring your own yarn and knitting needles and join us for some fun conversations!  
**When:** Wednesdays at 6:00pm

## FRIDAY SENIOR SWIM

Bring your swimsuit, towel, sunscreen and water bottle. A lifeguard will be on duty. Optional water aerobics will take place in the shallow end of the pool where feet touch the bottom. Lap swimming and water weights will also be available.

**When:** Fridays at 11:00am—Noon (Starting on June 1) - \$2

**Where:** Waupun Family Aquatic Center located at 701 County Park Road

## AEROBICS

Move to the music through a variety of exercises designed to increase muscle strength, range of movement and activities for daily living. Hand-held weights, elastic tubing with handles and a ball are offered for resistance. A chair is used for seated exercises and standing support. . It is suitable for beginning to intermediate skill levels. Multiple water breaks are offered throughout the class. Give it a try! **FREE!**

Instructors and equipment provided. Free!

**When:** Wednesdays at 10:30am



## BINGO

10 free games of bingo are played 2–3 times a month. Prizes include free lunch, gift certificates and more. Bring your friends and join us!



# LIBRARY

The Waupun Public Library is located at 123 S. Forest St. and is open the following hours: Monday – Thursday, 9:00 am to 8:00 pm; Friday and Saturday, 9:00 am to 4:30 pm.

## BOOK CLUB & BOOK SALES

The Waupun Public Library hosts a book club on the second Wednesday of every month at 11:00am and 6:00pm. Please contact Lisa Bille at 920-324-7925 or [lbille@monarchlibraries.org](mailto:lbille@monarchlibraries.org) to join.



The Friends of Waupun Library holds book sales on the second Monday of every month from 10:00am-6:00pm. Book sales scheduled for the remainder of 2023 are as follows: April 10, May 8, June 12, July 10, August 14, September 11, October 9, November 13 and December 11.

## FAMILY STORYTIME

Storytimes are held every Wednesday at 11:00am. Upcoming storytimes scheduled are April 10, April 17, April 24, May 1 and May 8. Check back in September for a fall schedule.

## TODDLER TUESDAYS

A new drop-in program is called Toddler Tuesdays, where kids can explore hands on and physical activities between 10am and Noon. Upcoming dates scheduled are April 16 & May 21.

## LEGO CLUB

Lego Club is scheduled again for all ages (under 5 must be accompanied by an adult) and our next scheduled date is April 18 from 3:30-5:00.

## SUMMER READING PROGRAM

Registration for the 2024 Summer Library Program, “Adventure Begins At Your Library”, begins on June 10 and runs through July 12. All kids under the age of 18 are invited to participate. Performances and events scheduled for the summer are:

- Monday June 10 registration begins for the 2024 Summer Reading Program
- Tuesday June 11 @ 1pm Mischief & Magic magic show
- Wednesday June 19 @ 1 pm Smarty Pants and the Big Balloon Show
- Thursday June 27 11 am-12 pm Bluey Song & Dance show
- Wednesday July 3 @ 1 pm Puzzle Race, Jr, watch for more info
- Wednesday July 10 @ 1 pm Science Heroes: Adventure Of the Lost Treasure
- Friday July 12 from 4 pm-6 pm Carnival Finale

Contact Tami Lont at 324-7925 or [tami@monarchlibraries.org](mailto:tami@monarchlibraries.org) with any questions on our youth events.



## GAME NIGHTS

The library hosts game nights from 5:00-7:00, where we play traditional board games along with Pokemon TCG and Magic:The Gathering, and more. Scheduled game nights are April 22, May 20 and June 24. Contact Jess Kiehl at 920-324-7925 or [jkiehl@monarchlibraries.org](mailto:jkiehl@monarchlibraries.org) with any questions about game nights.

## ADULT PROGRAMS

- April 23 at 6:00pm: Joan and Jeff Johannes will present a poetry reading from their published works.
- May 16 at 6:00pm: Information will be shared about the Wisconsin assisted living volunteer program.
- May 23 at 6:00pm: The Waupun Historical Society will present Declassified:A Look at World War II Through the Eyes of Walter Riel, Army Air Corp Reconnaissance Photographer.
- June 18 at 6:00pm & 7:00pm: Heidi from Rens Floral will present Flower Arranging Workshops.
- July 16 at 6:00pm: Evonne Kooiman will demonstrate food canning techniques.

## ADULT CRAFT NIGHTS

Join us the second Tuesday of every month at 6:00pm for a craft. Check Facebook or our website for the month's featured craft. Additional craft kits will be available on a first come, first served basis after the in-person craft night. Contact Pam Garcia at 324-7925 or [pgarcia@monarchlibraries.org](mailto:pgarcia@monarchlibraries.org) with any questions regarding adult programming.

## ONLINE LIBRARY CARD REGISTRATION

We would prefer that you come in to complete the paperwork and get your library card, as a physical card is needed in order to check out physical materials from the library. However, if you are interested in immediately gaining access to online resources, you can do so by registering online.

You can register for a card online by following these steps:

1. Visit the library catalog website at [www.monarchcatalog.org](http://www.monarchcatalog.org)
2. Click on Log in/Register under My Account.
3. You will be routed to a page to login, but you should click on "Click or Tap here to register now".
4. Fill out the information.
5. You will be assigned a temporary barcode starting in PACREG with numbers behind it. Be sure to write this whole number down, as this is your temporary barcode for now.

You can use this temporary barcode and the PIN you will create to access most of our online resources. Once you register, a librarian will send you instructions within 72 hours on how you can obtain your physical card. You do not have to get a physical card, yet, if you are just going to be using our online resources (Overdrive, etc). You will need to get a physical card if you plan to check out physical materials from the library. Please call the library at 920-324-7925 or email Pam Garcia at [pgarcia@monarchlibraries.org](mailto:pgarcia@monarchlibraries.org) with any questions.

# AQUATIC CENTER



**WAUPUN**  
CITY OF SCULPTURE

## WAUPUN FAMILY AQUATIC CENTER

The YMCA of Dodge County in collaboration with the City of Waupun, will be providing lifeguard management and staff of the Waupun Family Aquatic Center.

**SUMMER 2024 JUNE 1 - AUGUST 18**



### City of Waupun General Swimming Pool Information

**LOCATED IN FOND DU LAC COUNTY PARK 701 County Park Rd, Waupun, WI 53963**

The Waupun Family Aquatic Center features a zero depth entry, two water slides, a kiddie slide, water spouts and fountains; a lap pool area, two water basketball hoops, a one meter diving board, a bathhouse with private changing and showering areas; lounges, large shade umbrellas and concession stand with snacks and refreshments. There is a shelter area available to be rented for private parties.

### ONLINE REGISTRATION AVAILABLE FOR SWIM LESSONS AND SEASON PASSES!

Season passes may be purchased prior to pool opening online at [www.theydc.org](http://www.theydc.org), or in person at City Hall starting April 8, or at the Waupun Family Aquatic Center beginning June 1.

Swim lessons may be purchased prior to pool opening online at [www.theydc.org](http://www.theydc.org) starting April 8, at the YMCA of Dodge County, or at the Waupun Family Aquatic Center beginning June 1.

Waupun Family Aquatic Center (920)324-7924  
Waupun City Hall (920)324-7900  
YMCA of Dodge County (920)887-8811



Follow us on Facebook for up to date closings and pool information at Waupun Family Aquatic Center

SCAN HERE FOR



SEASON PASSES

# AQUATIC CENTER

The YMCA of Dodge County in collaboration with the City of Waupun, will be providing lifeguard management and staff at the Waupun Family Aquatic Center. Any questions regarding operational hours or activities can be directed to the YMCA of Dodge County Aquatics Director at (920)887-8811.

## HOURS OF OPERATION

### JUNE 1 – AUGUST 18

#### Open Swim

Monday – Friday 1:00 PM – 6:00 PM

June 10-13 the Pool will close at 5:00 PM for lessons

Saturday & Sunday 12:00 PM – 7:00 PM

Pool hours are subject to change based on weather/attendance.

Note: 3:30-3:45 PM all pool break; weekends only.

## SPECIAL EVENTS

### FATHER'S DAY

JUNE 16

Dad's get in for \$1.00 all day long!

### RECIPROCAL DAYS JUNE 9, JULY 7 & AUGUST 4

Waupun Pass holders will be able to use the YMCA of Dodge County, Horicon Aquatic Center, Fox Lake Aquatic Center & Lomira Pool for FREE!

### SENIOR SWIM (50+)

FRIDAYS 11AM-12 PM

### WATER AEROBICS

WEDNESDAYS 4-5 PM

### CANDACE WOJAHN

#### START OUT SAFE WATER PROGRAM

June 10-13 Morning and Evening Times

Ages: 1-12

Times: 10:25-10:55a, 11-11:30a, 11:35-12:05p, 12:10-12:40p, 5:15-5:45p, 5:50-6:20p

### FREE Program!

Registration can be done online at [www.theydc.org](http://www.theydc.org)



## SEASON PASSES

Individual Pass: Resident - \$100 Non Resident - \$125  
 Family Pass (5): Resident - \$200 Non Resident - \$250  
 Military (Active or Retired) 15% Discount

Family Season Pass includes up to 5 family members and is intended for immediate family only; all family members must reside at the same address.

An additional 2 family members can be added for \$10 each.

**A maximum of 7 family members per Family Season Pass.**

To qualify for the Military Discount, a Military ID must be shown at pick-up.

## DAILY PASSES

|                        |      |
|------------------------|------|
| Ages 3 years and under | FREE |
| Ages 4 years and older | \$6  |
| Senior 60+ Discount    | \$2  |

Please note that all patrons are required to pay to enter the Waupun Family Aquatic Center; weather swimming or not.

## SWIM LESSONS

|                                   |                                |
|-----------------------------------|--------------------------------|
| Session 1: June 17 - June 27 (PM) | Registration Deadline: June 12 |
| Session 2: July 8 - July 18       | Registration Deadline: July 3  |
| Session 3: July 22 - Aug. 1 (PM)  | Registration Deadline: July 17 |
| Session 4: August 5 - August 15   | Registration Deadline: July 31 |

For more information on swim lessons visit the YMCA of Dodge County online at [www.theydc.org](http://www.theydc.org) or call (920)887-8811.

## PRIVATE SHELTER RENTAL

Rent the shelter for all occasions. 2 hours for \$25. For more information, contact the Waupun Pool Manager at (920)324-7924.

### CONTACT INFORMATION: FOLLOW US ON FACEBOOK FOR UP TO DATE CLOSINGS & POOL INFORMATION!

Waupun Family Aquatic Center (920)324-7924

YMCA of Dodge County (920)887-8811

Waupun City Hall (920)324-7900

**SEASON PASS REGISTRATION FORM** Register online through the YMCA at [www.theydc.org](http://www.theydc.org), or return form with payment to Waupun City Hall prior to the pool opening starting April 8, or the Waupun Family Aquatic Center starting June 1. Make checks payable to the City of Waupun.

Family Last Name \_\_\_\_\_

First Name (1) \_\_\_\_\_ First Name (2) \_\_\_\_\_

First Name (3) \_\_\_\_\_ First Name (4) \_\_\_\_\_

First Name (5) \_\_\_\_\_ \*First Name (6) \_\_\_\_\_

\*First Name (7) \_\_\_\_\_

\*\$10 Additional Family Pass Fee

Address \_\_\_\_\_

Phone (Home) \_\_\_\_\_ Phone (Other) \_\_\_\_\_

I/We the Parent(s) or Guardian(s) of the above individual(s) hereby release, absolve and agree to hold harmless the organizers, supervisors, city employees and participants from any claims arising out of injury to me/us or my/our child(ren). I/We accept full responsibility for liability and cost of treatment from injury for the above registered person(s). I/We agree to treat with respect any and all staff involved and any equipment that is utilized throughout the summer season.

Signature \_\_\_\_\_ Date \_\_\_\_\_

# AQUATIC CENTER



## WAUPUN 2024 Swim Lessons

The City of Waupun, in collaboration with the YMCA of Dodge County will be providing swim lesson instruction at the Waupun Family Aquatic Center. Any questions regarding these programs or activities should be directed to the YMCA of Dodge County Aquatics Director at (920)887-8811 or the Waupun Family Aquatic Center at (920)324-7924.

The Swim Lesson program is based on swimming skills that will allow participants to enjoy aquatic activities throughout their lives. These skills include personal safety, stroke development, and water games. All swim lessons will be held at the Waupun Family Aquatic Center. Lessons will be cancelled if the air temperature drops below 65 degrees, the water temperature drops below 72 degrees, tornado warning or if it is lightening or thundering. We reserve the right to combine or cancel classes after the first day of class if a minimum enrollment of 4 is not met. Each class time holds a maximum of 25 participants. We will be accepting limited registrations for each time frame to stay within guidelines of instructor to student ratios. Registration is on a first come, first serve basis. Register early!

-----  
Please check the Waupun Family Aquatic Center Facebook page or call the YMCA for cancellations.

### PRESCHOOL AND YOUTH SWIMMING LESSONS

#### Fees: \$40 per session

Preschool and Youth classes are 30 minutes in length. All classes are 4 days per week, Monday - Thursday. All children will be assessed on the first day of class to ensure that they are at the right level. Please indicate the level you think most appropriately fits your child's skill level. Make up days will be held on Fridays.

**REGISTER EARLY....** Space is limited to a maximum of 25 participants per time frame.

#### REGISTRATION

Registration and fees will be accepted online through the YMCA at [www.theydc.org](http://www.theydc.org) starting April 8, at the YMCA of Dodge County, by calling (920)887-8811, or at the Waupun Family Aquatic Center during normal operating hours beginning June 1, 2024. Registration form on reverse side. Checks, cash or credit cards (online only) accepted. Make checks payable to the YMCA of Dodge County.

#### Session 1: June 17-June 27

6:00 PM - 6:30 PM (Water Exploration, Levels 1-2)  
6:35 PM - 7:05 PM (Levels 1-3)  
7:10 PM - 7:40 PM (Levels 3-5)  
Make up days: June 21 & June 28  
Registration Deadline: June 12

#### Session 2: July 8- July 18

11:00 AM - 11:30 AM (Water Exploration, Levels 1-2)  
11:35 AM - 12:05 PM (Levels 1-3)  
12:10 PM - 12:40 PM (Levels 3-5)  
Make up days: July 12 & July 19  
Registration Deadline: July 3

#### Session 3: July 22- August 1

6:00 PM - 6:30 PM (Water Exploration, Levels 1-2)  
6:35 PM - 7:05 PM (Levels 1-3)  
7:10 PM - 7:40 PM (Levels 3-5)  
Make up day: July 26 & August 2  
Registration Deadline: July 17

#### Session 4: August 5 - August 15

11:00 AM - 11:30 AM (Water Exploration, Levels 1-2)  
11:35 AM - 12:05 PM (Levels 1-3)  
12:10 PM - 12:40 PM (Levels 3-5)  
Make up day: August 9 & August 16  
Registration Deadline: July 31

School Disclaimer: These materials are neither sponsored nor endorsed by the School District, its employees or agents. The materials, view and information they express, do not reflect the approval or disapproval of the district and/or school administration.

**WAUPUN FAMILY AQUATIC CENTER**  
701 County Park Rd. Waupun, WI 53963  
P: (920) 324-7924  
[facebook.com/waupunfamilyaquaticcenter](https://facebook.com/waupunfamilyaquaticcenter)

**YMCA OF DODGE COUNTY**  
220 Corporate Drive, Beaver Dam WI 53916  
P: (920) 887-8811 W: [www.theydc.org](http://www.theydc.org)  
[facebook.com/theydc](https://facebook.com/theydc)

# AQUATIC CENTER

## SWIM LESSONS REGISTRATION FORM

Online registration available through the Y starting April 8 at [www.theydc.org](http://www.theydc.org)! This is recommended as spots fill up fast!

Parents Name \_\_\_\_\_ Emergency Contact \_\_\_\_\_  
 Address \_\_\_\_\_ Phone \_\_\_\_\_  
 City \_\_\_\_\_ State \_\_\_\_\_ Zip \_\_\_\_\_ Relationship \_\_\_\_\_  
 Phone \_\_\_\_\_

| Participants Name | Date of Birth | Session | Level | Time  |
|-------------------|---------------|---------|-------|-------|
| 1. _____          | _____         | _____   | _____ | _____ |
| 2. _____          | _____         | _____   | _____ | _____ |
| 3. _____          | _____         | _____   | _____ | _____ |

Liability Waiver: I hereby certify that my child(ren) is/are in normal health and capable of safe participation in the YMCA/Waupun Swimming Lessons Program. I assume all risk and hazards incidental to the conduct of this program. I hereby authorize treatment for my child(ren) in the event that parents cannot be reached.

Signature \_\_\_\_\_ Date \_\_\_\_\_

Return this form to the YMCA starting April 8, or to the Waupun Family Aquatic Center starting June 1.

SCAN HERE



TO REGISTER

## SWIM LESSON LEVEL DESCRIPTIONS



# AQUATIC CENTER

## CANDACE WOJAHN START OUT SAFE WATER PROGRAM



**June 10 – June 13**

**FREE!**

**Ages 6-12 Years**

**10:25 AM – 10:55 AM**

**Ages 1-3 Years – Parent/Child**  
(1 Child per Parent/Guardian)

**11:00 AM – 11:30 AM**

**Ages 3-5 Years**

**11:00 AM – 11:30 AM**

**Ages 5-8 Years**

**11:35 AM – 12:05 PM**

**Ages 6-12 Years**

**12:10 PM – 12:40 PM**

**Ages 3-8 Years**

**5:15 PM – 5:45 PM**

**Ages 6-12 Years**

**5:50 PM – 6:20 PM**

**Ages 1-3 Years – Parent/Child**  
(1 Child per Parent/Guardian)

**5:50 PM – 6:20 PM**

**Registration begins April 8**

**Ways to register:**

- Online at [www.theydc.org](http://www.theydc.org) and clicking the online registration tile
- Using your phone's camera to scan the QR code on the right
- Calling the Y at (920)887-8811

**SCAN HERE**



**TO REGISTER**

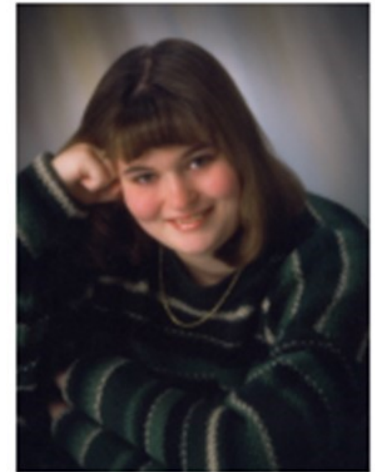
**WAUPUN FAMILY AQUATIC CENTER**  
701 County Park Rd. Waupun, WI 53963  
P: (920) 324-7924  
[facebook.com/waupunfamilyaquaticcenter](https://facebook.com/waupunfamilyaquaticcenter)

**YMCA OF DODGE COUNTY**  
220 Corporate Drive, Beaver Dam WI 53916  
P: (920) 887-8811 W: [www.theydc.org](http://www.theydc.org)  
[facebook.com/theydc](https://facebook.com/theydc)

# AQUATIC CENTER

47

## CANDACE WOJAHN START OUT SAFE WATER PROGRAM



### THE PURPOSE

This annual program is designed to reduce children's risk of drowning by teaching them basic water safety skills. Held at the Waupun Family Aquatic Center, basic pool rules and water games are also incorporated in this curriculum. It is the intent of the Wojahn Family to provide swimming skills to all area children including those who would not otherwise have the opportunity. Swimming is a life skill that can begin at an early age and last a lifetime.

### THE PERSON

Candace Wojahn was a kind passionate woman who grew up in the Waupun area. At an early age she learned how to swim at the Fond du Lac County Park pool and enjoyed it very much. She also loved music, theater, dolphins, and children. She worked at the Waupun Wee Care Facility and McDonald's. She volunteered her time at the Union Congregational Church, helping with Sunday school and in the nursery. Candace also knew challenges having been diagnosed with epilepsy as a teen, and later as a single mother of three daughters. Candace passed away in 2007 due to an epileptic episode. It is in her memory and spirit this program was created.

### THE ENDOWMENT FUND

In honor and in memory of Candace, the Candace Wojahn Endowment Fund has been created. This was established by Keith & Carla Wojahn, with the help and support from Candace's siblings Tabitha Bossenbroek and Benjamin Wojahn, along with Candace's daughters Alia and Alyssa Hutchison, and Jordan Wojahn. The YMCA of Dodge County, as a 501c3 organization, will manage the contributions and investments. It is the intent that this fund will be perpetual, serving the Waupun area for years to come. It is from this fund the Candace Wojahn Start Out Safe Water Program is financed. Additional future programs may be developed as funding becomes available.



# WAUPUN COMMUNITY CENTER



## COMING FALL OF 2024!

Location: 520 McKinley St, Waupun

### Recreation Programs for All Ages!

Arts & Crafts  
Recreation  
Social Activities  
Fitness Classes  
Education & Health Seminars  
Plus Much More!

#### New Facility will offer:

- Common spaces for community meetings and gatherings
- Regulation sized gym
- Fitness center
- Rental spaces for gatherings
- Multi-purpose room/kitchen

#### Volunteers are needed!

Contact Rachel Kaminski at  
920-324-7930 for more information on  
Community Center programs.



**WAUPUN**  
CITY OF SCULPTURE

[cityofwaupun.org](http://cityofwaupun.org)





# BEAN BAG TOSS RENTAL<sup>49</sup>

## Waupun Recreation Department Bean Bag Toss Equipment Rental Agreement



1. All bean bag toss board and bean bag rentals must be made by calling Rachel Kaminski at the Waupun Senior Center/Recreation Department at (920) 324-7930. If no one answers, please leave a message.
2. The rental fee for one Bean Bag Toss Set (2 boards & 8 bean bags with bean bag carrying bag) is \$10/set. A separate \$50 security deposit is required. The minimum amount of a bean bag toss set rental is one full set. The maximum amount of a bean bag toss rental is fifteen full sets.
3. Cash or check accepted. Checks can be made to: City of Waupun
4. After payment and rental agreement have been approved and received at the Waupun Senior Center/Recreation Department located at 301 E. Main Street, a pick-up time and return time will be scheduled.
5. All bean bag toss boards and bean bag pick-ups and returns will take place at Waupun City Hall located at 201 E Main Street. They are stored in the white garage on the south side of the building.
6. All rented equipment must be returned: bean bag toss boards, bean bags and bean bag carrying bag(s).
7. All bean bag toss equipment rentals are nonrefundable.

| Equipment Rented  | Fee                 | Date Rented | Use Date | Pick Up                    | Return                     |
|---|---------------------|-------------|----------|----------------------------|----------------------------|
| Bean Bag Toss Set (2 boards & 8 bean bags in 1 bean bag carrying bag) X _____ = | \$10 X _____ Set(s) |             |          | Date: _____<br>Time: _____ | Date: _____<br>Time: _____ |
| _____ Bean Bag Toss Boards + _____ Bean Bags in _____ Bean Bag Carrying Bags    | = \$ _____          |             |          |                            |                            |

I acknowledge receipt of above equipment owned by the City of Waupun Recreation Department. I will pick up said equipment at the established agreed upon time and date and return said equipment to the place of loan at the established agreed upon time and date. I agree that any item(s) not returned, or not returned in same condition as when loaned will be replaced by the Waupun Recreation Department at my expense.

Bean Bag Toss Renter Signature: \_\_\_\_\_ Date: \_\_\_\_\_

Printed Name: \_\_\_\_\_ Phone: \_\_\_\_\_

Address: \_\_\_\_\_ Program Director: \_\_\_\_\_

# PARK GUIDE

|   | Backstop | Baseball | Basketball | Batting | Benches | Bike Racks | Bike/walk | Bleachers | Concessions | Cooking | Drinking | Horseshoe | Parking | Pickleball | Pier | Picnic | Play System | Portable | Restrooms | Sandbox | Shelter | Shore | Soda | Soccer Field | Street Parking | Tennis Court | Volleyball |
|---|----------|----------|------------|---------|---------|------------|-----------|-----------|-------------|---------|----------|-----------|---------|------------|------|--------|-------------|----------|-----------|---------|---------|-------|------|--------------|----------------|--------------|------------|
| Buwalda Park<br>716 Buwalda Dr.                           |          |          | X          |         | X       |            |           |           |             |         | X        |           |         |            |      | X      | X           | X        |           |         | X       |       |      |              | X              |              |            |
| Dodge Park<br>518 S. Madison St.                          | X        |          | X          |         | X       |            |           |           |             | X       | X        |           |         |            |      | X      | X           |          | X         | X       | X       |       | X    |              | X              |              |            |
| Harris Mill Park<br>300 N. Mill St.                       |          |          |            |         | X       | X          | X         |           |             |         | X        |           | X       |            | X    | X      |             |          | X         |         | X       | X     | X    |              |                |              |            |
| Heritage Park<br>220 Brandon St.                          |          |          |            |         | X       |            |           |           |             |         |          |           |         |            |      | X      |             |          |           |         |         | X     |      |              | X              |              |            |
| Johnson's West<br>End Park<br>200 Beaver Dam St.          | X        | X        | X          |         | X       | X          |           |           |             | X       | X        | X         |         | X          |      | X      | X           |          | X         | X       | X       |       | X    |              | X              | X            |            |
| McCune Park & Ball<br>Diamond Complex<br>313 N. Grove St. | X        | X        | X          |         | X       | X          |           | X         | X           |         | X        |           | X       |            |      | X      | X           |          | X         |         | X       |       | X    |              | X              |              | X          |
| Meadow View Park<br>79 Meadowview<br>Cir.                 |          |          |            |         |         |            | X         |           |             |         |          |           |         |            |      |        |             |          |           |         |         |       |      |              | X              |              |            |
| Medema Fields<br>728 W. Lincoln St.                       | X        | X        |            | X       | X       |            |           | X         | X           |         | X        |           | X       |            |      | X      | X           | X        | X         | X       | X       |       |      | X            | X              |              |            |
| Pine Street Park<br>404 Pine St.                          |          |          |            |         | X       |            | X         |           |             |         |          |           |         |            |      | X      | X           | X        |           |         | X       | X     |      |              | X              |              |            |
| Rock River Trail  |          |          |            |         | X       |            | X         |           |             |         |          |           |         |            | X    |        |             |          |           |         |         | X     |      |              |                |              |            |
| Schlieve Field<br>559 Home Ave.                           | X        | X        |            | X       |         |            |           | X         | X           |         | X        |           | X       |            |      | X      |             |          | X         |         | X       |       |      |              |                |              |            |
| Shaler Memorial Park<br>400 N. Madison St.                |          |          |            |         | X       |            |           |           |             |         |          |           | X       |            |      | X      |             |          |           |         |         | X     |      |              |                |              |            |
| Tanner Park<br>503 W. Spring St.                          |          |          |            |         | X       |            | X         |           |             |         |          |           | X       |            |      |        | X           |          |           |         |         | X     |      |              |                |              |            |
| Wilcox Park<br>404 S Watertown St.                        | X        |          | X          |         | X       |            |           |           |             |         | X        | X         |         |            |      | X      | X           |          | X         | X       | X       |       | X    |              | X              |              |            |
| Waupun Baseball<br>Complex<br>810 E. Lincoln St.          | X        | X        |            | X       | X       | X          |           | X         | X           |         | X        |           | X       |            | X    | X      | X           | X        | X         | X       | X       |       | X    |              | X              |              |            |
| Waupun Family<br>Aquatic Center<br>701 County Park        |          |          |            |         |         | X          | X         |           | X           |         | X        |           | X       |            |      | X      |             |          | X         |         |         |       |      |              |                |              |            |
| Zoellner Park<br>910 Newton Ave.                          |          |          |            |         | X       |            |           |           |             |         | X        |           |         |            |      |        | X           |          | X         |         |         |       |      |              | X              |              |            |

# PARK RENTALS

51

## HOW TO RENT A PARK SHELTER

Do you need an outdoor space to host a party or gathering? Call (920) 324-7930 for availability and to schedule an appointment to reserve a park shelter. There will be no holds placed on shelters. A rental permit with payment must be received to complete your rental.

### West End Park Shelter, 200 Beaver Dam Street

\$65 resident

\$90 non-resident

12 picnic tables, grill, drinking water, restrooms, playground, baseball field backstop, basketball court, tennis court & pickleball courts, horseshoe pits



### McCune Park Shelter, 313 N. Grove Street

\$65 resident

\$90 resident

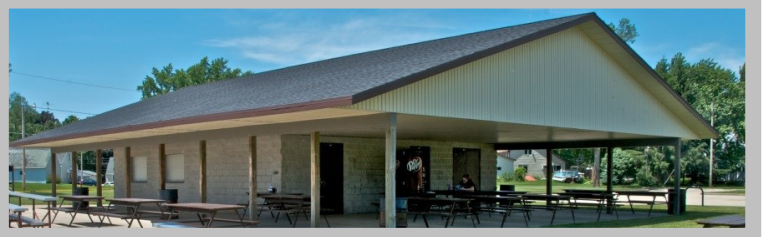
12 picnic tables, grill, drinking water, restrooms, playground, baseball field, basketball court, volleyball court,

### McCune Park Concession Stand

\$100 resident

\$115 non-resident

Separate \$50 security deposit



### Wilcox Park Shelter, 404 S. Watertown Street

\$65 residents

\$90 non-residents

4 picnic tables, grill, drinking water, restrooms, playground, baseball field backstop, basketball court, horseshoe pit



### Dodge Park Shelter, 518 S. Madison Street

\$50 resident/ \$75 non-resident + Additional \$15 cleaning fee

6 picnic tables, grill, drinking water, restrooms, playground, baseball field backstop, soccer field



### Harris Mill Park Shelter, 300 N. Forest Street

\$65 resident

\$90 non-resident

17 picnic tables, drinking water, restrooms, shore fishing



# 52 **PARK SHELTER PERMIT**

1. All reservation appointments must be made by calling Waupun Senior Center at (920) 324-7930. If no one answers, please leave a message.
2. No glass bottles are allowed in the parks at any time.
3. If bathrooms are locked/dirty or if electrical problems occur, call (920) 324-7918 during business hours or (920) 324-7911 after business hours and weekends. Please remember that most parks have a standard 110 electrical system so watch what you plug in.
4. After payment and permit have been turned in, you will receive your park reservation slip to serve as your receipt.
5. Patrons are asked to please not park cars on the grass by shelters. If you are required to drive up to the shelter to unload supplies, please move your vehicle to a proper parking spot as soon as possible.
6. Pets are not allowed.
7. Park restrooms will be unlocked.
6. **Park shelter rentals are nonrefundable.**



**Please fill out this form and return this portion with payment to: 301 East Main Street, Waupun, WI 53963. Make checks payable to: City of Waupun**

**Park Fee: Resident - \$65                      Non-Resident - \$90**  
**McCune Park with Concession Stand: Resident - \$100                      Non-Resident - \$115                      Security Deposit - \$50**

**Parks available for rent and the approximate number of picnic tables available:**  
McCune Park—12      West End Park—12                      Dodge Park—6                      Wilcox Park—4                      Harris Mill Park—15

Park User Name: \_\_\_\_\_

Address: \_\_\_\_\_ City: \_\_\_\_\_

State: \_\_\_\_\_ Zip: \_\_\_\_\_ Phone Number: \_\_\_\_\_

Email: \_\_\_\_\_

Park: \_\_\_\_\_ Date reserved for: \_\_\_\_\_

Hours of Use: \_\_\_\_\_ Number of people expected at event: \_\_\_\_\_

\*\*\*City of Waupun reserves the right to require a security officer for large events.

Do you plan on selling alcohol? \_\_\_\_\_ Do you plan on consuming alcohol? \_\_\_\_\_

\*\*\*A liquor license is not required unless you are selling. For a Liquor License contact the Clerk's office at (920) 324-7900.

Are there any additional activities planned for your event? Ex: Bands, DJ's, Tents, Bouncy Houses  
\_\_\_\_\_

\_\_\_\_\_  
Park User Signature & Date

\_\_\_\_\_  
Program Director Signature & Date

## LOCATION

Near the Waupun Area Animal Shelter. Please use driveway entrance to the Waupun Area Animal Shelter at 901 N Madison Street.



## HOURS

Sunrise to Sunset, 7 days a week, year round.

## IDENTIFICATION

An I.D. tag must be worn by your dog at all times, as well as a rabies tag and city tag.

## FOOD & DRINK

Human food is prohibited in the park. Dog training treats as well as drinking water are permitted.

## CLEAN UP

You are responsible for picking up all fecal matter from your dog. Bags and a waste receptacle will be provided (at no charge) in the park.

## ADDITIONAL INFORMATION

Please do not allow your dog to dig. Holes can be a hazard for dogs and people. The City of Waupun and the Waupun Area Animal Shelter do not provide drinking water for dogs. Users are encouraged to bring their own water. Dog owners are responsible for cleaning up after their dogs. Please use the provided collection bags and deposit them into the garbage can at the entrance of the park. All visitors have a stake in keeping the park clean. These rules are in place to make the park a pleasant experience for all.

## DOG LICENSES

An annual city licensing tag (valid January 1-December 31) is required. Dog tags can be purchased in the City Clerk's Office at City Hall, 201 E. Main St. during regular business hours, Monday thru Friday from 7:30am-4:30pm.

License fees are as follows

- \$3.00 Spayed/Neutered
- \$8.00 Unaltered Female/Male
- \$5.00 late fee if purchased after March 31

## INJURY/LIABILITY

The City of Waupun, Fond du Lac County Humane Society, and Waupun Area Animal Shelter, are not responsible for any injury to the pet or the owner while using the park.

## LEASH POLICY

Waupun Dog Park is an off-leash facility. Dogs however must be kept on a leash until inside the park area. All dogs must be under complete voice control and within eyesight of the owner. If you cannot control your pet off-leash you will need to keep your pet leashed at all times for the safety and enjoyment of all users. You are not allowed to leave your dog in the park unattended. The dog park is for dogs and their handlers. Children under the age of 16 must be accompanied by an adult. No other use and/or animals are permitted.

## DOG CONFLICTS

Aggressive dogs are not allowed. All dogs must be removed from the park at the first sign of aggression. Handlers are responsible for any injuries caused by the dog (s) under their control. Any altercations between dogs must be reported to the City of Waupun during regular business hours or in writing to: City of Waupun, 201 E. Main St., Waupun, WI 53963.

## VACCINATIONS

Waupun Dog Park does not require but strongly recommends current (within past 12 months) vaccinations for the following diseases:

- Distemper, Hepatitis, Parainfluenza, Lepto (4 serotypes), Parvo
- Corona Virus
- Bordetella (kennel cough)

A current rabies certificate and tag is required, therefore dogs must be over 4 months of age to enjoy the park.

WAUPUN PARK PROGRAM

# MAKE YOUR MARK ON THE PARK



Come on down to your favorite Park Program park to make your mark! Park Leaders will paint your hand and print it inside the Park Program storage space.

LAST WEEK OF THE 2024 PARK PROGRAM SEASON:

AUGUST 5 - 9



**WAUPUN**  
CITY OF SCULPTURE

## 2024 WAUPUN SUMMER RECREATION GUIDE



**SHARE  
YOUR  
SUMMER  
FUN!**

Are you involved in some kind of recreation or leisure activity in Waupun? Are you interested in advertising an activity, sport, or event? If yes, please send along dates, times, pictures or logos that you would like to be included with your information to [parks@cityofwaupun.org](mailto:parks@cityofwaupun.org).